

Activity ID	Activity Name	Start	Finish	Original Duration
CITY OF MANDEVILLE Hurricane Ida NRCS Drainage Canal Clearing 211.23.006		22-May-23	18-Sep-23	83
A1000	Notice to Proceed	22-May-23		0
A1010	Substantial Completion	18-Aug-23	18-Aug-23	1
A1020	Punchlist (If Required)	21-Aug-23	01-Sep-23	10
A1030	Final Inspection & Closeout	05-Sep-23	18-Sep-23	10
A1040	End Project		18-Sep-23	0
CITY OF MANDEVILLE.Sheet 3 Garden Ave. Outfall / Woodridge Chateau Ditch		22-May-23	22-May-23	1
A1050	Mobilization	22-May-23	22-May-23	1
A1060	Canal Cleaning (Vegetative Debris Reduced, Chipped, and Spread On-Site)	22-May-23	22-May-23	1
CITY OF MANDEVILLE.Sheet 4 Woodstone Garden-Dorado Outfall		22-May-23	22-May-23	1
A1070	Mobilization	22-May-23	22-May-23	1
A1080	Canal Cleaning (Vegetative Debris Reduced, Chipped, and Spread On-Site)	22-May-23	22-May-23	1
CITY OF MANDEVILLE.Sheet 5 Tupelo Trace Ditch		31-May-23	02-Jun-23	3
A1130	Canal Cleaning (Vegetative Debris Removed and Hauled Off-Site)	31-May-23*	02-Jun-23	3
CITY OF MANDEVILLE.Sheet 6 Sanctuary Main Ditch		05-Jun-23	09-Jun-23	5
A1140	Canal Cleaning (Vegetative Debris Removed and Hauled Off-Site)	05-Jun-23	09-Jun-23	5
CITY OF MANDEVILLE.Sheet 7 Sanctuary Main Ditch 1		12-Jun-23	13-Jun-23	2
A1150	Canal Cleaning (Vegetative Debris Removed and Hauled Off-Site)	12-Jun-23	13-Jun-23	2
CITY OF MANDEVILLE.Sheet 8 Fontainebleau Ditch		14-Jun-23	15-Jun-23	2
A1160	Canal Cleaning (Vegetative Debris Removed and Hauled Off-Site)	14-Jun-23	15-Jun-23	2
CITY OF MANDEVILLE.Sheet 9 Crystal Lake Ditch		23-May-23	24-May-23	2
A1090	Mobilization	23-May-23	23-May-23	1
A1100	Canal Cleaning (Vegetative Debris Reduced, Chipped, and Spread On-Site)	24-May-23	24-May-23	1
CITY OF MANDEVILLE.Sheet 10 Bayou Chinchuba		21-Jul-23	17-Aug-23	20
A1230	Canal Cleaning (Vegetative Debris Removed and Hauled Off-Site)	21-Jul-23	17-Aug-23	20
CITY OF MANDEVILLE.Sheet 11 Old Golden Shores		16-Jun-23	22-Jun-23	5
A1170	Canal Cleaning (Vegetative Debris Removed and Hauled Off-Site)	16-Jun-23	22-Jun-23	5
CITY OF MANDEVILLE.Sheet 12 Galvez Canal		23-Jun-23	26-Jun-23	2
A1180	Canal Cleaning (Vegetative Debris Removed and Hauled Off-Site)	23-Jun-23	26-Jun-23	2
CITY OF MANDEVILLE.Sheet 13 Ravine Aux Coquille		27-Jun-23	30-Jun-23	4
A1190	Canal Cleaning (Vegetative Debris Removed and Hauled Off-Site)	27-Jun-23	30-Jun-23	4
CITY OF MANDEVILLE.Sheet 14 East Fork Ravine Aux Coquille		03-Jul-23	07-Jul-23	4
A1200	Canal Cleaning (Vegetative Debris Removed and Hauled Off-Site)	03-Jul-23	07-Jul-23	4
CITY OF MANDEVILLE.Sheet 15 St. Tammany Trace Canal		23-May-23	24-May-23	2
A1110	Mobilization	23-May-23	23-May-23	1
A1120	Canal Cleaning (Vegetative Debris Reduced, Chipped, and Spread On-Site)	24-May-23	24-May-23	1
CITY OF MANDEVILLE.Sheet 16 Little Bayou Castine		10-Jul-23	17-Jul-23	6
A1210	Canal Cleaning (Vegetative Debris Removed and Hauled Off-Site)	10-Jul-23	17-Jul-23	6
CITY OF MANDEVILLE.Sheet 17 Atalin and Albert Ditch		18-Jul-23	20-Jul-23	3
A1220	Canal Cleaning (Vegetative Debris Removed and Hauled Off-Site)	18-Jul-23	20-Jul-23	3

 Actual Level of Effort
  Remaining Work
  Milestone

 Actual Work
  Critical Remaining Work
  summary

Bayou Chinchuba: L = 13,034 LF

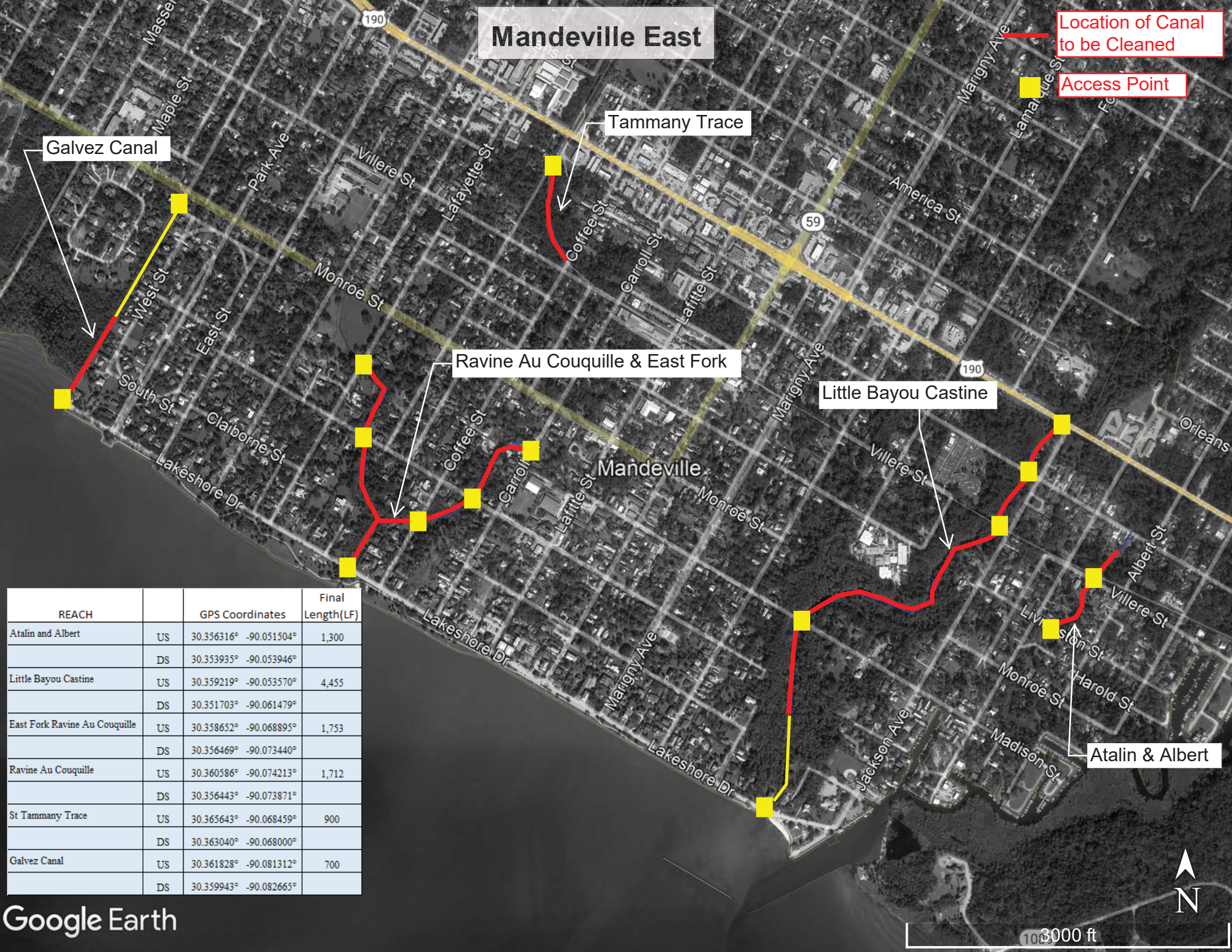
Location of Canal
to be Cleaned

Access Point



Bayou Chinchuba

Lewisburg



Mandeville East

Location of Canal to be Cleaned

Access Point

Galvez Canal

Tammany Trace

Ravine Au Couquille & East Fork

Little Bayou Castine

Atalin & Albert

REACH		GPS Coordinates	Final Length(LF)
Atalin and Albert	US	30.356316° -90.051504°	1,300
	DS	30.353935° -90.053946°	
Little Bayou Castine	US	30.359219° -90.053570°	4,455
	DS	30.351703° -90.061479°	
East Fork Ravine Au Couquille	US	30.358652° -90.068895°	1,753
	DS	30.356469° -90.073440°	
Ravine Au Couquille	US	30.360586° -90.074213°	1,712
	DS	30.356443° -90.073871°	
St Tammany Trace	US	30.365643° -90.068459°	900
	DS	30.363040° -90.068000°	
Galvez Canal	US	30.361828° -90.081312°	700
	DS	30.359943° -90.082665°	



Mandeville West

Location of Canal to be Cleaned

Access Point

Woodbridge Chateau Ditch & Garden Ave Outfall

Woodston Garden-Darado Outfall

Tupelo Trace Ditch

Sanctuary Main Ditch

Sanctuary Ditch 1

Fountainbleau Ditch

Christal Lake Ditch

Old Golden Shores

REACH		GPS Coordinates	Final Length(LF)
Sanctuary Main Ditch	US	30.385683° -90.107128°	2,877
	DS	30.381205° -90.114550°	
Sanctuary Ditch 1	US	30.379772° -90.112389°	937
	DS	30.379039° -90.115157°	
Tupelo Trace Ditch	US	30.389200° -90.111313°	1,390
	DS	30.388406° -90.115131°	
Woodstone Garden-Darado Outfall		30.389994° -90.115344°	25
Garden Ave Outfall	US	30.391825° -90.113779°	1,050
	DS	30.391864° -90.117131°	
Fountainbleau Ditch	US	30.385502° -90.094634°	650
	DS	30.384393° -90.095924°	
Old Golden Shores	US	30.368970° -90.096390°	2,644
	DS	30.375083° -90.099787°	
Chrystal Lake Ditch	US	30.374733° -90.109369°	1,112
	DS	30.371837° -90.108451°	
Wooridge Chateau Ditch	US	30.392061° -90.117177°	400
	DS	30.390887° -90.117106°	

