









N:\Projects\_Active\20-1700-30-1765-Drawing\30-1765-03.dwg

SUMMARY OF ESTIMATED QUANTITIES

ITEM NO.	DESCRIPTION	UNIT	QUANTITY
201-01-00100	CLEARING AND GRUBBING	LS	1
202-02-06100	REMOVAL OF CONCRETE WALKS AND DRIVES	SY	26.6
202-02-32180	REMOVAL OF PIPE HEADWALLS	SY	3
202-03-38000	RELOCATION OF SIGN (METAL)	EA	3
202-03-38020	RELOCATION OF SIGN POLE (METAL)	EA	3
203-05-00100	EXCAVATION AND EMBANKMENT	LS	1
203-10-00100	CLEANING EXISTING DITCHES	LF	80
204-05-00100	TEMPORARY SEDIMENT CHECK DAMS (HAY)	EA	49
204-06-00100	TEMPORARY SILT FENCING	LF	3,300
701-03-01042	SIDE DRAIN PIPE (24" RCP/RPVC)	LF	216
701-03-01082	SIDE DRAIN PIPE (36" RCP/RPVC)	LF	96
701-10-01020	REINFORCED CONCRETE PIPE (EXTENSION) (15")	LF	28
701-11-01100	REINFORCED CONCRETE PIPE (EXTENSION) (36")	LF	68
701-11-01060	REINFORCED CONCRETE PIPE ARCH (EXTENSION) (30" EQUIV.)	LF	24
701-15-00100	CONCRETE COLLAR	EA	8
702-03-00100	CATCH BASINS (CB-01)	EA	5
702-04-00001	ADJUSTING MISCELLANEOUS STRUCTURES (REPLACE DRAINAGE GRATES)	EA	3
706-02-00300	CONCRETE WALK (6" THICK)	SY	1,315.0
707-01-00200	CONCRETE CURB (BARRIER)	LF	205
707-03-00100	COMBINATION CURB AND GUTTER	SY	455
713-01-00100	TEMPORARY SIGNS AND BARRICADES	LS	1
726-01-00100	BEDDING MATERIAL	CY	118.5
727-01-00100	MOBILIZATION	LS	1
729-01-00100	SIGN (TYPE A)	SQ FT	54.0
729-22-00100	SQUARE TUBING POST WITH 2 1/4" ANCHOR	EA	9
732-01-02080	PLASTIC PAVEMENT STRIPING (24" WIDTH) [THERMOPLASTIC 125 MIL]	LF	130
732-03-02000	PLASTIC PAVEMENT STRIPING (BROKEN LINE) (4" WIDTH) [THERMOPLASTIC 90 MIL]	MILE	0.092
739-01-00100	HYDRO-SEEDING	ACRE	1.00
740-01-00100	CONSTRUCTION LAYOUT	LS	1
741-11-00100	ADJUSTING WATER VALVE	EA	1
NS-201-00005	ARBORIST SERVICES (BRANCHES AND ROOTS)	LS	1
NS-500-00340	SAW CUTTING ASPHALT CONCRETE PAVEMENT	IN-LF	3,000
NS-600-00220	SAW CUTTING PORTLAND CEMENT CONCRETE PAVEMENT	IN-LF	60
TS-MSC-00020	ADJUSTING IN-GROUND UTILITY ACCESS BOX	EA	1

95% PRELIMINARY - FOR REVIEW ONLY  
 NOT TO BE USED FOR CONSTRUCTION, BIDDING, RECORDATION, CONVEYANCE, SALES, OR AS THE BASIS FOR THE ISSUANCE OF A PERMIT.  
 MARK SCHUTT, MEYER ENGINEERS, LTD.  
 REGISTRATION #30528

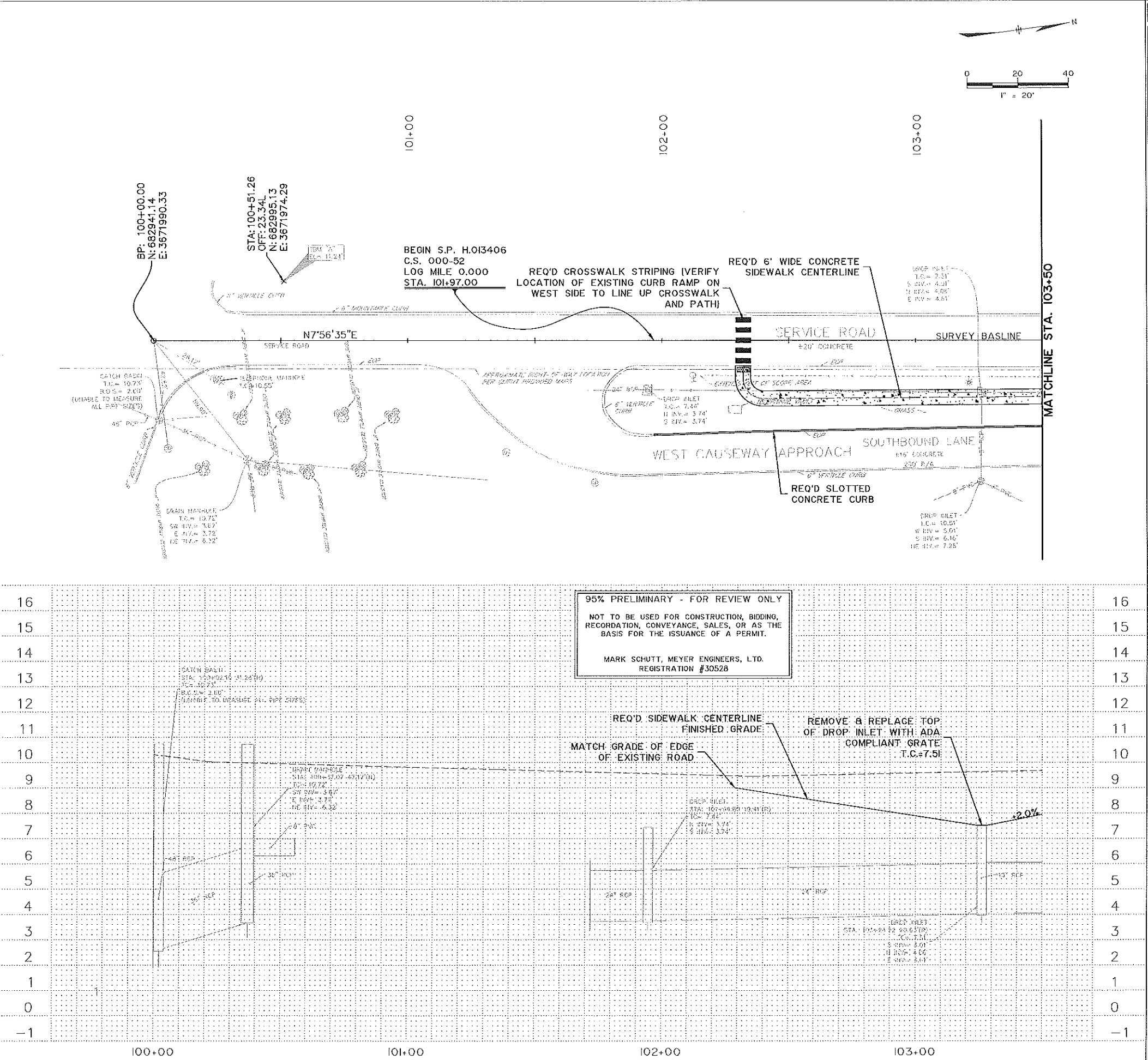
 MEYER ENGINEERS, LTD.	SUMMARY OF ESTIMATED QUANTITIES W CAUSEWAY APPROACH BIKE/PED MANDEVILLE		REVISION DESCRIPTION NO. DATE BY	REVISION CHECKED DATE SHEET 08-14-2019 1 OF 4	PARISH CONTROL SECTION ST. TAMMANY 000-52 STATE PROJECT H-013406	SHEET NUMBER 3
			REVISION DESCRIPTION NO. DATE BY	REVISION CHECKED DATE SHEET 08-14-2019 1 OF 4	PARISH CONTROL SECTION ST. TAMMANY 000-52 STATE PROJECT H-013406	SHEET NUMBER 3

LEGEND - EXISTING TOPOGRAPHY		COMMON ABBREVIATIONS	
	EXISTING RIGHT OF WAY	AC	ASBESTOS CONCRETE
	SERVITUDE	BDS	BOTTOM OF STRUCTURE
	DROP INLET, DRAIN LINE	CI	CAST IRON
	DRAIN MANHOLE, DRAIN LINE	CMP	CORRUGATED METAL PIPE
	DITCH WITH CENTERLINE	CPP	CORRUGATED PLASTIC PIPE
	EDGE OF WOODS (THICK COVERAGE)	CSW	CONCRETE SIDEWALK
	TREE (WITH DRAP LINE), TREE STAND, BUSH	EDP	EDGE OF PAVEMENT
	HEDGE ROW	FCA	FIELD CONNECTION ASSUMED
	BUILDING, WITH PORCH AND STAIRS	GI	GALVANIZED IRON
	FENCE WITH GATE	POCA	POINT OF CONNECTION ASSUMED
	PROPERTY CORNER FOUND	PVC	POLYVINYL CHLORIDE
	PROPERTY CORNER SET UNLESS NOTED, 5/8" IRON ROD	RCP	REINFORCED CONCRETE PIPE
	TEMPORARY BENCHMARK (TBM)	RCPA	REINFORCED CONCRETE ARCH PIPE
	TV PEDESTAL, TV MANHOLE/Vault	STL	STEEL
	TV UTILITY MARKER, BORE HOLE	TC	TERRACOTTA OR CLAY
	POWER LINE, UNDERGROUND	TN	TOP OF METER
	POWER POLE, DEADMAN	TP	TOP OF NUT
	COMBINATION POLE, GUY POLE	TP	TOP OF PIPE
	POWER JUNCTION, Vault	TV	TOP OF VALVE
	POWER DROP, TRANSFORMER	UNK	UNKNOWN
	POWER UTILITY MARKER, BORE HOLE	UPOC	UNKNOWN POINT OF CONNECTION
	GAS LINE, UNDERGROUND		
	GAS RISER, REGULATOR, VENT		
	GAS SERVICE WITH METER, WITHOUT METER		
	GAS VALVE, UTILITY MARKER, BORE HOLE		
	RAILROAD MILE POST, SWITCH		
	RAILROAD SIGNAL, CONTROL BOX		
	SEWER MANHOLE, LINE		
	SEWER BLOWOUT, FORCE MAIN LINE		
	SEWER CLEANOUT, PUMP		
	SEWER UTILITY MARKER, BORE HOLE		
	SEWER LIFT STATION, TREATMENT STATION		
	TRAFFIC SIGNAL POWER, UNDERGROUND		
	TRAFFIC INTERCONNECT, LOOP DETECTOR		
	TRAFFIC SIGNAL, SUSPENDED, CANTILEVERED		
	TRAFFIC DEADMAN, MISC. POLE		
	TRAFFIC POWER Vault, CONTROL BOX		
	TRAFFIC SIGN, FEDERAL AID MARKER		
	PARKING METER, LIGHT STANDARD, Vault		
	TRAFFIC CAMERA POLE, CONTROL BOX, PULL BOX		
	TELEPHONE LINE, UNDERGROUND		
	TELEPHONE FIBER OPTIC LINE, UNDERGROUND		
	TELEPHONE PEDESTAL, MANHOLE		
	TELEPHONE UTILITY MARKER, BORE HOLE		
	WATER LINE		
	FIRE HYDRANT, WATER VALVE Vault		
	WATER METER, CLEANOUT, WELL		
	WATER UTILITY MARKER, BORE HOLE		
	BILLBOARD SUPPORT, SIGN POLE		
	MAILBOX, STORAGE TANK VENT		
	FLAGPOLE, MONITORING WELL		

LEGEND	
	REMOVAL OF CONCRETE
	REMOVAL OF ASPHALT
	ASPHALT PAVEMENT
	CONCRETE PAVEMENT
	AGGREGATE SURFACE COURSE
	EXIST. ASPHALT PAVEMENT TO REMAIN

- GENERAL NOTES**
- THE LOCATION AND DEPTH OF ALL UNDERGROUND UTILITIES IS BASED ON INFORMATION AND LOCATION BY AGENTS OF THE RESPECTIVE UTILITY COMPANIES. CONFIRM LOCATION AND DEPTH IN FIELD PRIOR TO BEGINNING WORK. FOR THE CONTRACTOR'S CONVENIENCE, SOME OF THE UTILITY INFORMATION IS LISTED BELOW:  
 ATMOS ENERGY - JEFF RAIFORD 888-286-6700  
 AT&T - STEVE BERGERON (OFFICE) 985-867-1274  
 CLECO - TAYLOR CREECH 1-800-622-6537  
 GNOEC - CARY BOURGEOIS 225-612-4121  
 CHARTER COMMUNICATIONS - MARTIN BARRAS 1-866-248-7662  
 TAMMANY UTILITIES - TIM BROWN 985-898-2535  
 ST. TAMMANY DEPT. OF ENGINEERING 985-898-2552  
 MANDEVILLE PUBLIC WORKS - DAVID DEGENERES 985-624-3169  
 LA ONE CALL 1-800-272-3020
  - ALL EXISTING UTILITIES AND STRUCTURES NOT SPECIFICALLY CALLED OUT TO BE REMOVED SHALL REMAIN.
  - ALL STREET SIGNS SHALL BE RELOCATED AS DIRECTED BY PROJECT ENGINEER.
  - ELEVATIONS FOR THE TOP OF CASTING OF CATCH BASINS SHALL BE VERIFIED IN FIELD BY PROJECT ENGINEER PRIOR TO CONSTRUCTION.

NOTE: LEGEND AND GENERAL NOTES SHALL APPLY TO PLAN AND PROFILE SHEETS 4-B.

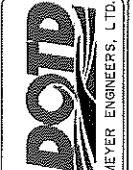


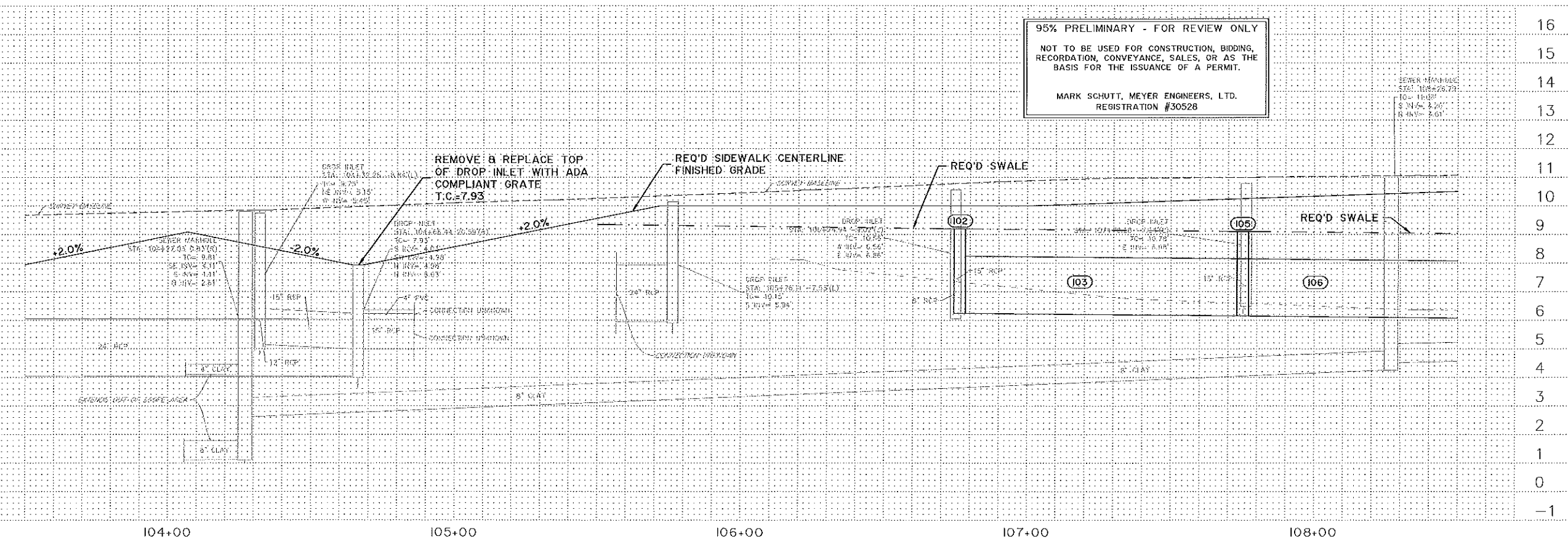
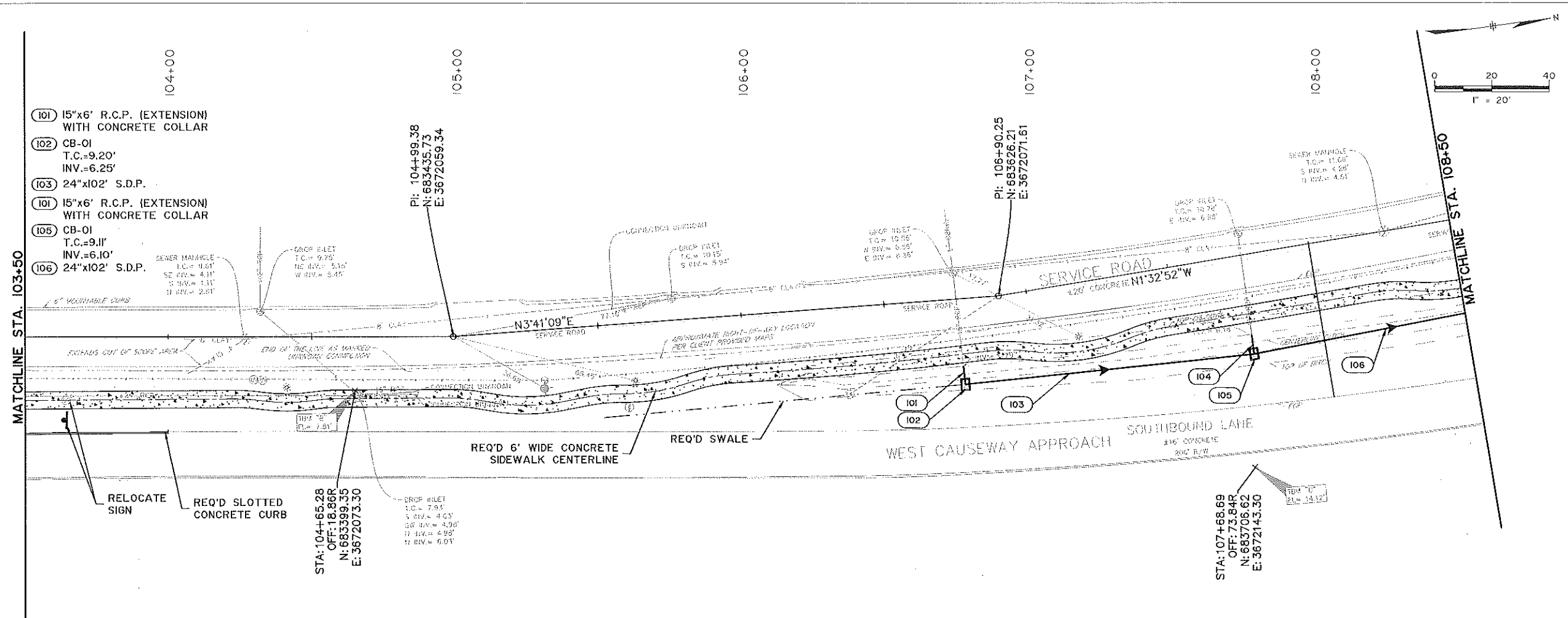
95% PRELIMINARY - FOR REVIEW ONLY  
 NOT TO BE USED FOR CONSTRUCTION, BIDDING, RECORDATION, CONVEYANCE, SALES, OR AS THE BASIS FOR THE ISSUANCE OF A PERMIT.  
 MARK SCHUTT, MEYER ENGINEERS, LTD.  
 REGISTRATION #30528

SHEET NUMBER	4
PROJECT	H.013406
SECTION	000-52
DATE	08/14/2019
BY	LOF 5
DATE	
NO.	
DATE	
DESIGNED	MAS
CHECKED	DHD
DETAILER	MAS
CHECKED	DHD
DATE	08/14/2019
BY	LOF 5
REVISION DESCRIPTION	



PLAN AND PROFILE  
 W CAUSEWAY APPROACH BIKE/PED MANDEVILLE





95% PRELIMINARY - FOR REVIEW ONLY  
 NOT TO BE USED FOR CONSTRUCTION, BIDDING,  
 RECORDATION, CONVEYANCE, SALES, OR AS THE  
 BASIS FOR THE ISSUANCE OF A PERMIT.  
 MARK SCHUTT, MEYER ENGINEERS, LTD.  
 REGISTRATION #30528

SHEET NUMBER	5
ST. TAMMANY	PARISH
CONTROL SECTION	000-52
DATE	08/14/2019
BY	2 OF 5
REVISION DESCRIPTION	
NO.	DATE
PLAN AND PROFILE	
W. CAUSEWAY APPROACH BIKE/PED MANDEVILLE	
MEYER ENGINEERS, LTD.	

N:\Projects - Active\2019\08-15\Drawings\2019-08-15.dwg