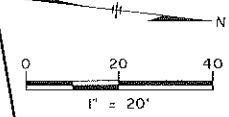
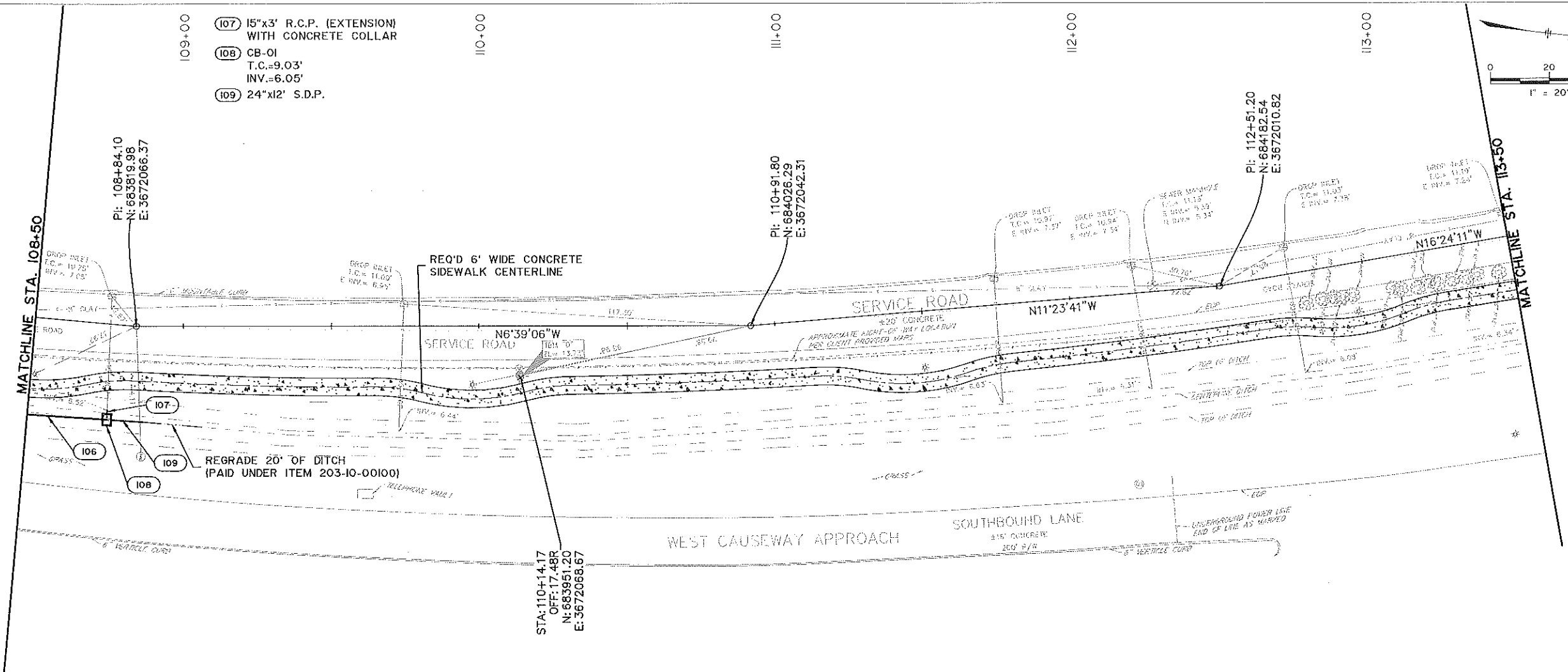
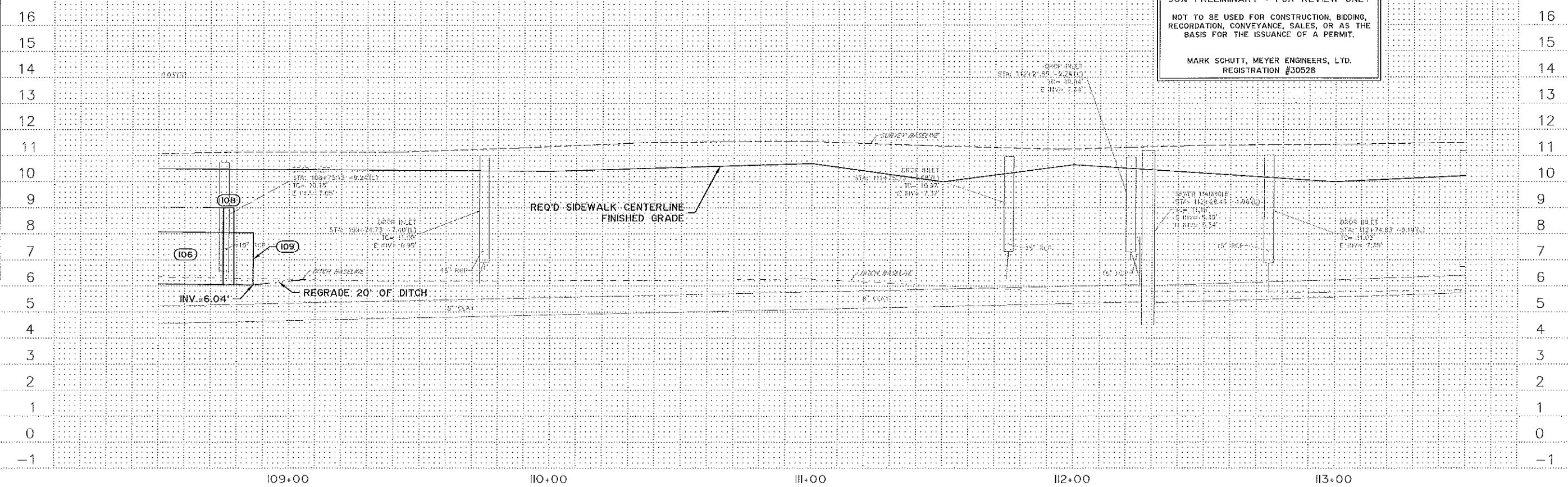


- (107) 15"x3' R.C.P. (EXTENSION) WITH CONCRETE COLLAR
- (108) CB-01  
T.C.=9.03'  
INV.=6.05'
- (109) 24"x12' S.D.P.

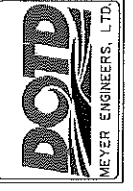


SHEET NUMBER	6
ST. TAMMANY	
PARISH	
CONTROL SECTION	000-52
STATE PROJECT	H013406
DESIGNED	M.A.S.
CHECKED	D.H.D.
DATE	08-14-2019
SHEET	3 OF 5

95% PRELIMINARY - FOR REVIEW ONLY  
 NOT TO BE USED FOR CONSTRUCTION, BIDDING, RECORDATION, CONVEYANCE, SALES, OR AS THE BASIS FOR THE ISSUANCE OF A PERMIT.  
 MARK SCHUTT, MEYER ENGINEERS, LTD.  
 REGISTRATION #30528



PLAN AND PROFILE  
 W CAUSEWAY APPROACH BIKE/PED MANDEVILLE



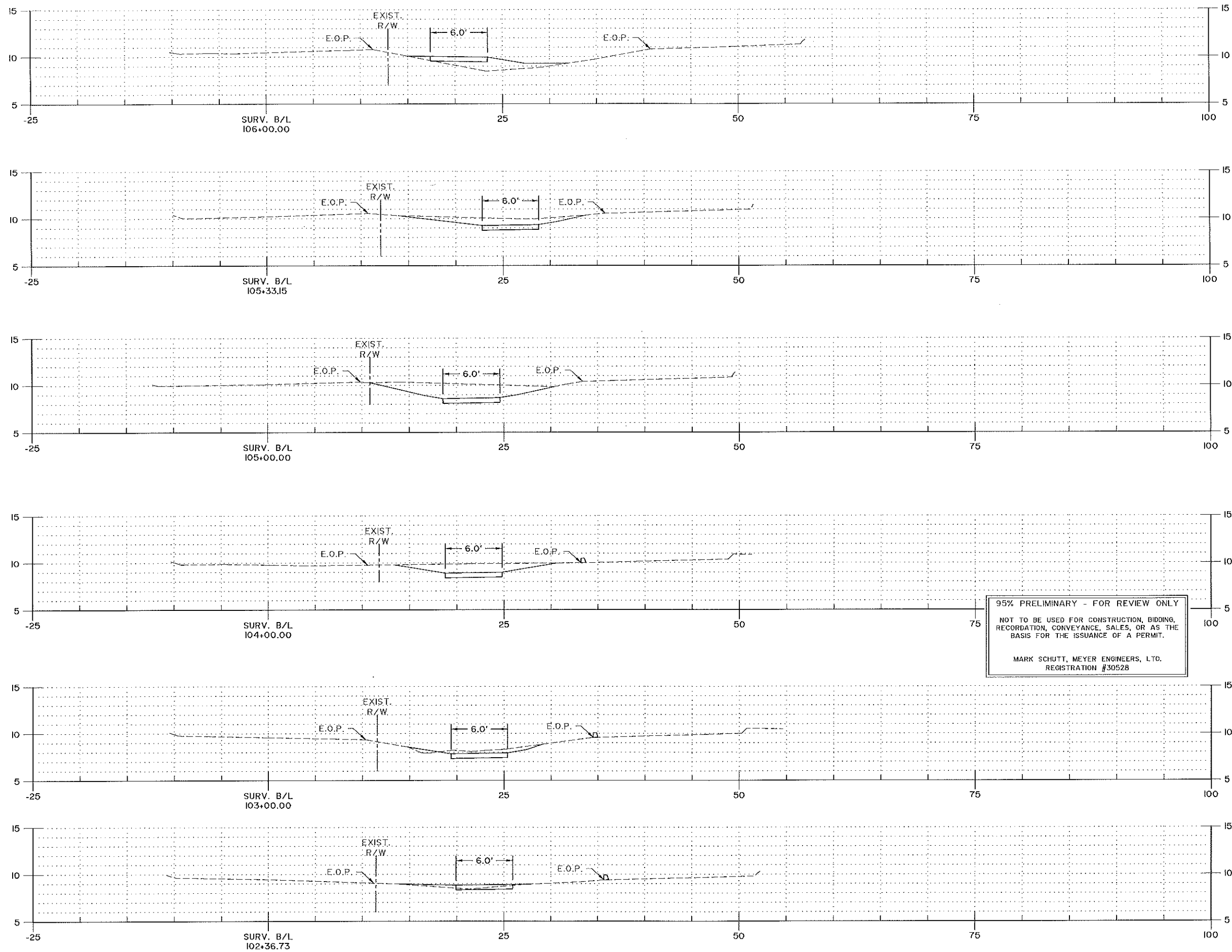
A:\Projects\_Active\190917\190917\_Schutt\Drawings\190917\_06.dwg











95% PRELIMINARY - FOR REVIEW ONLY  
 NOT TO BE USED FOR CONSTRUCTION, BIDDING,  
 RECORDATION, CONVEYANCE, SALES, OR AS THE  
 BASIS FOR THE ISSUANCE OF A PERMIT.  
 MARK SCHUTT, MEYER ENGINEERS, LTD.  
 REGISTRATION #30528

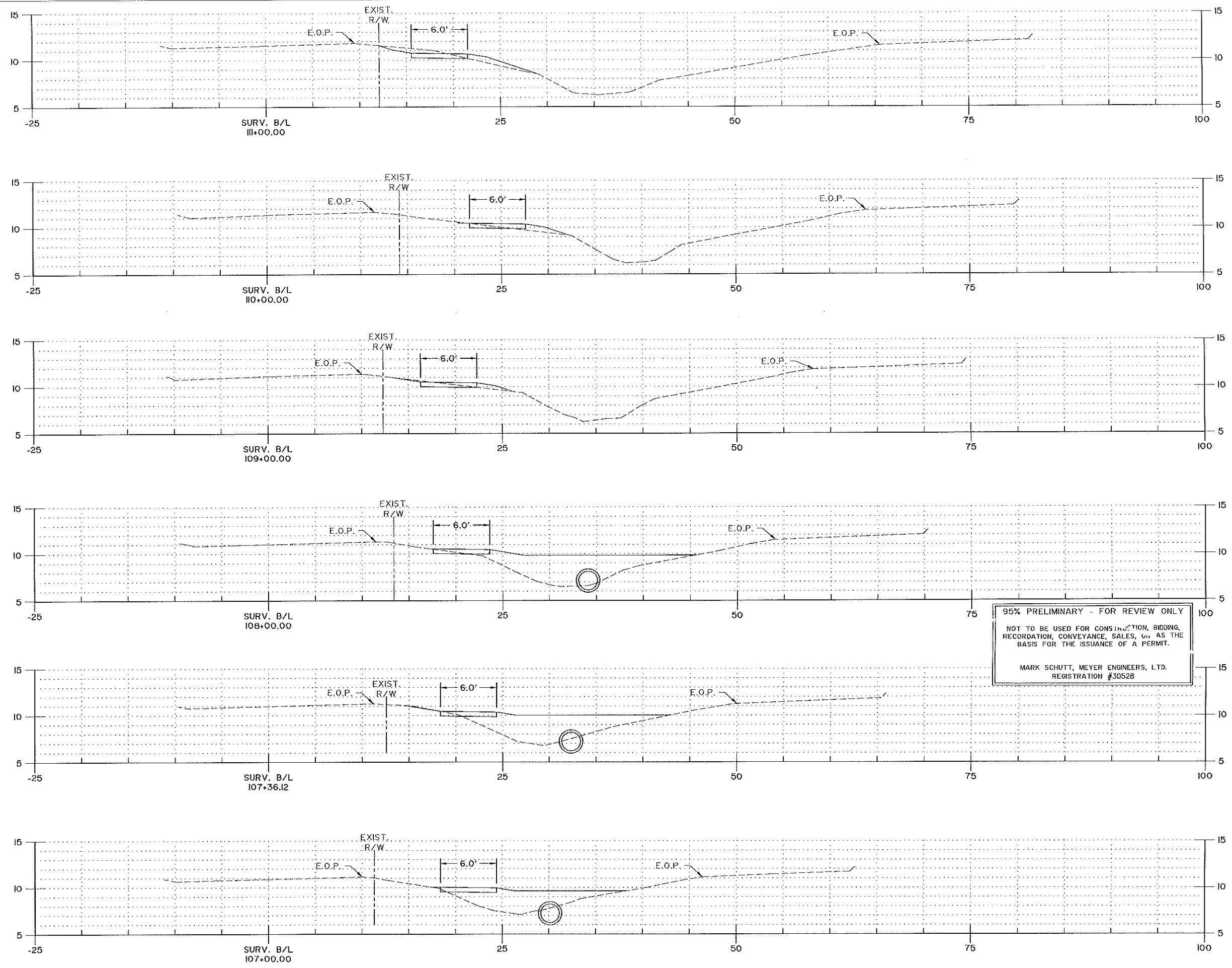
SHEET NUMBER		401
ST. TAMMANY	CONTROL SECTION	000-52
PARISH	STATE PROJECT	H-013-406
MAS DHD	MAS DHD	08-14-2019
DESIGNED	DETAILED	SHEET 1 OF 4
CHECKED	CHECKED	DATE
		BY
		NO.
		DATE
		REVISION DESCRIPTION

CROSS SECTIONS

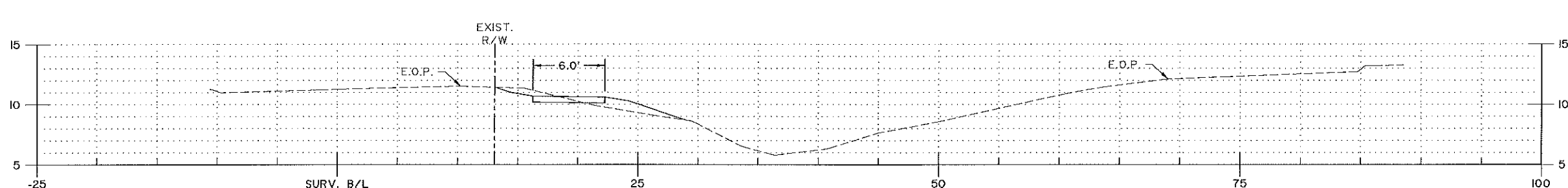
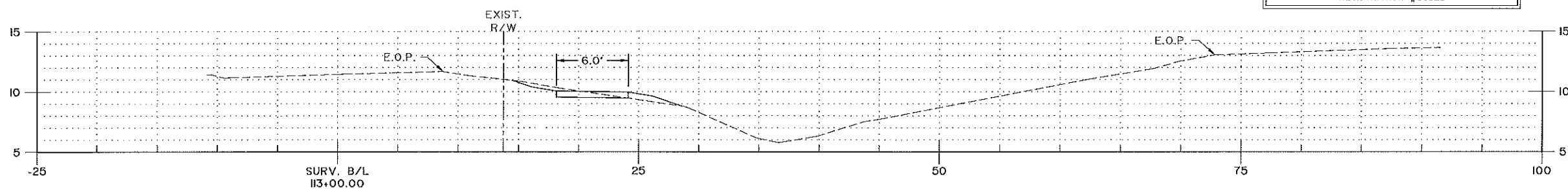
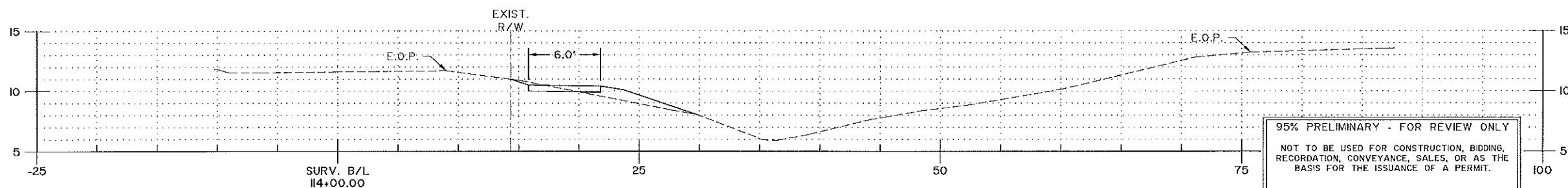
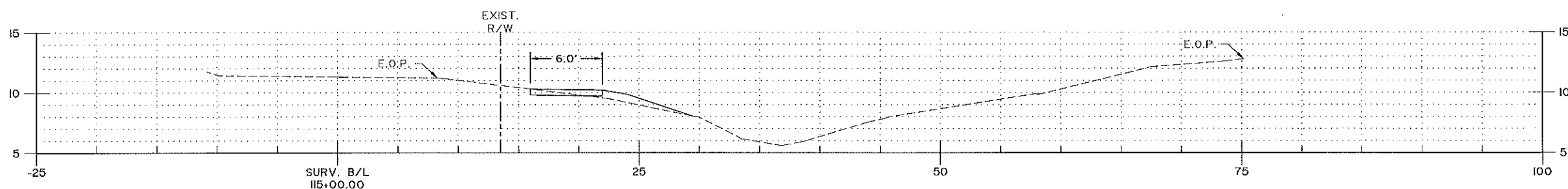
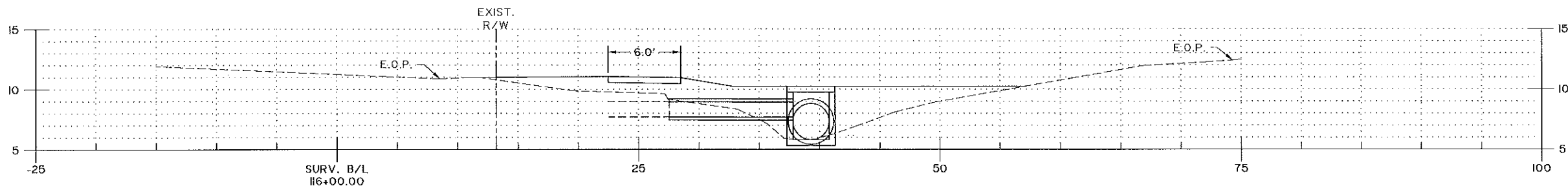
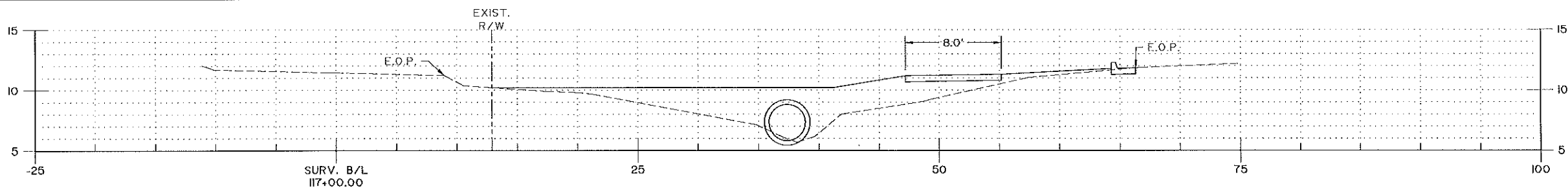
W CAUSEWAY APPROACH BIKE/PED MANDEVILLE

**DOTD**  
MEYER ENGINEERS, LTD.


A:\Projects\_Active\100-100-179\Drawings\26-179-401.dwg



N:\Projects\_Active\100\100-175\Drawings\26126-402.dwg

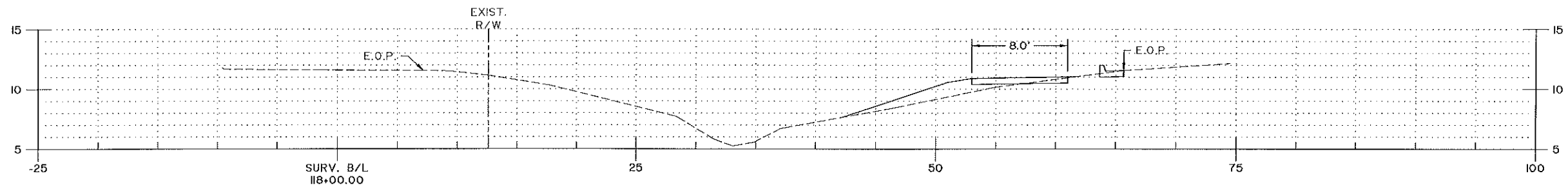
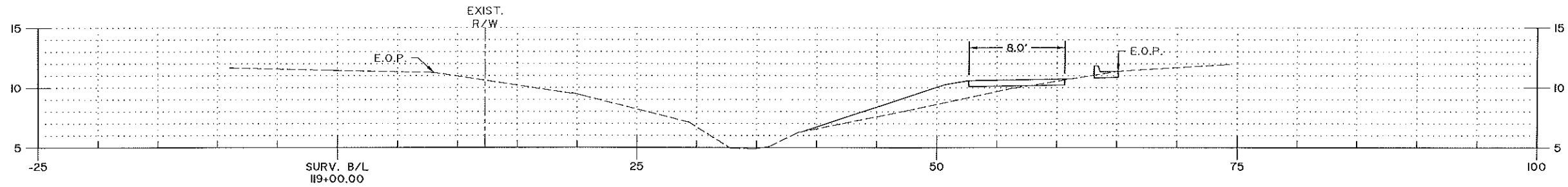
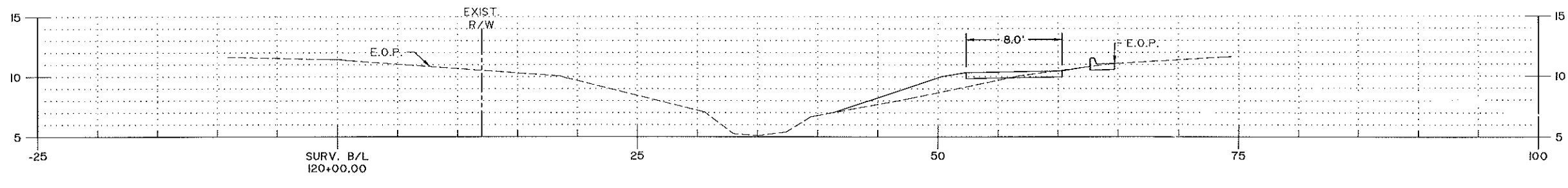
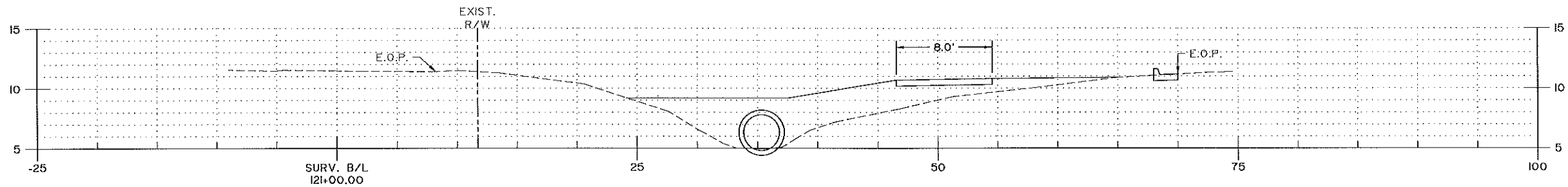


95% PRELIMINARY - FOR REVIEW ONLY  
 NOT TO BE USED FOR CONSTRUCTION, BIDDING,  
 RECORDATION, CONVEYANCE, SALES, OR AS THE  
 BASIS FOR THE ISSUANCE OF A PERMIT.  
 MARK SCHUTT, MEYER ENGINEERS, LTD.  
 REGISTRATION #30528

SHEET NUMBER		403	
ST. TAMMANY		CONTROL SECTION	
PARISH		000-52	
DESIGNED		DATE	
CHECKED		08/14/2019	
MAS		3 OF 4	
DHD		PROJECT	
DHD		H-013406	
REVISION DESCRIPTION			
NO. DATE BY			
CROSS SECTIONS			
W. CAUSEWAY APPROACH BIKE/PED MANDEVILLE			
 MEYER ENGINEERS, LTD.			

N:\Projects\Active\1750-130-175\Drawings\175-403.dwg

95% PRELIMINARY - FOR REVIEW ONLY  
 NOT TO BE USED FOR CONSTRUCTION, BIDDING,  
 RECORDATION, CONVEYANCE, SALES, OR AS THE  
 BASIS FOR THE ISSUANCE OF A PERMIT.  
 MARK SCHUTT, MEYER ENGINEERS, LTD.  
 REGISTRATION #30528



A:\Projects\Active\201760\1760-17-MANDEVILLE\1760-17-404.dwg