

MARINERS VILLAGE
MANDEVILLE HARBOR LLC
MANDEVILLE, LA

PRELIMINARY
NOT FOR
CONSTRUCTION

ISSUE DATE: 02/18/2022

REVISIONS		
#	DATE	DESCRIPTION

DRAWN: _____ REVIEWED: _____





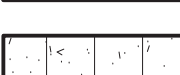
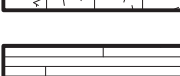
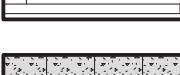
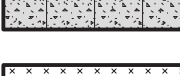


SCHEMATIC
DESIGN

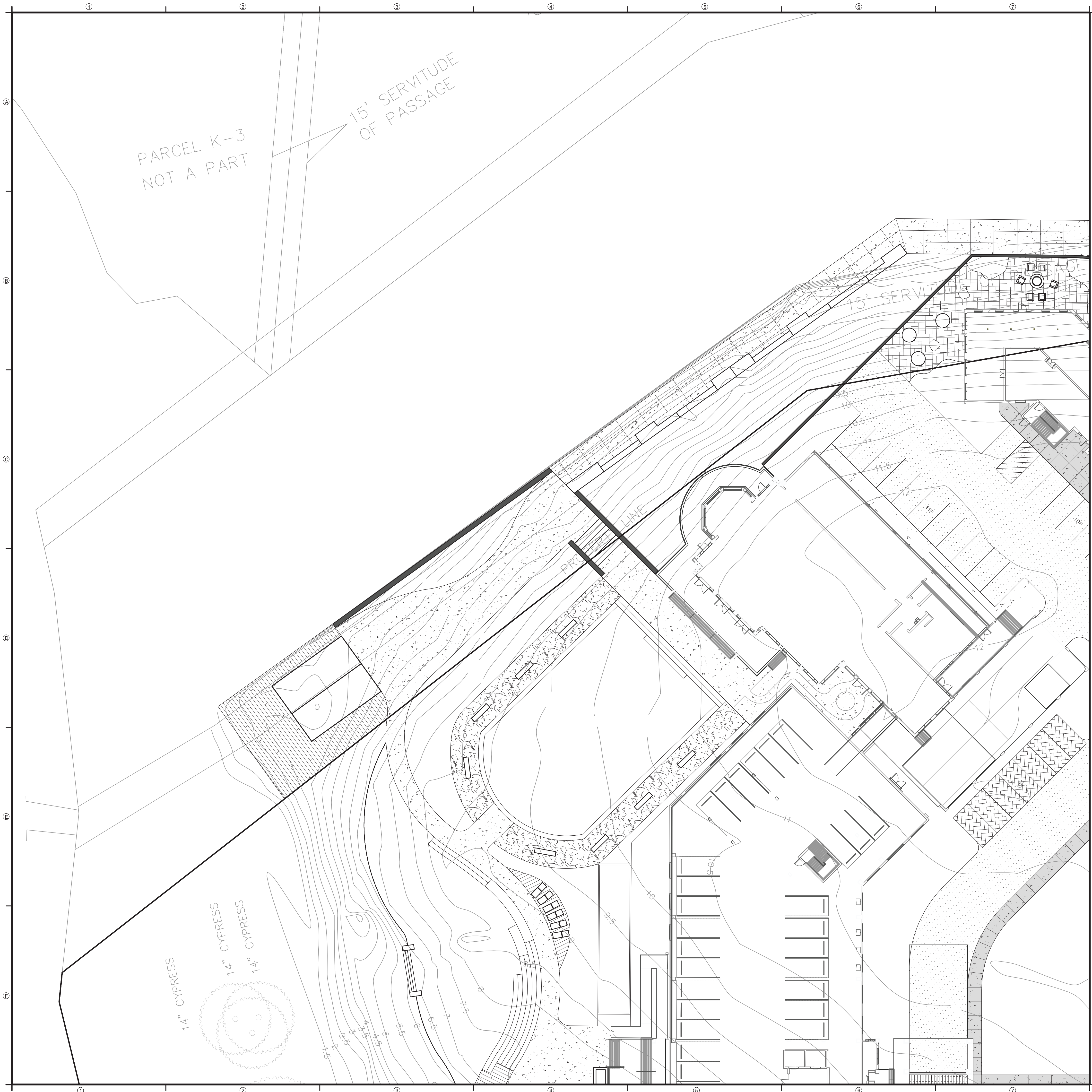
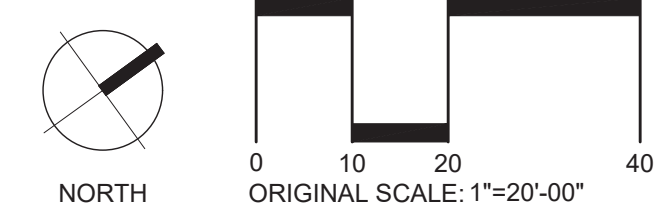
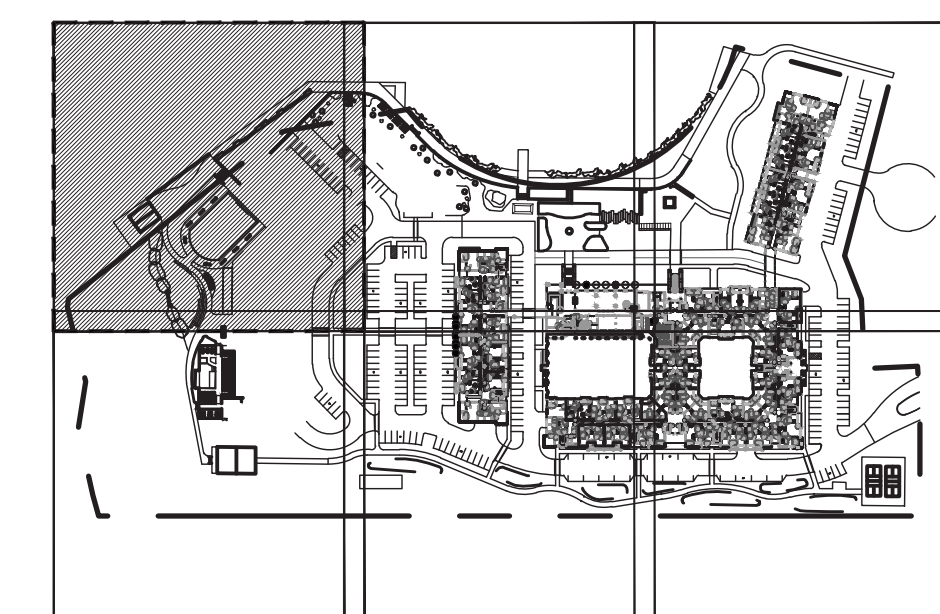
PROJECT NUMBER: 6778

FIRST FLOOR
LAYOUT PLAN

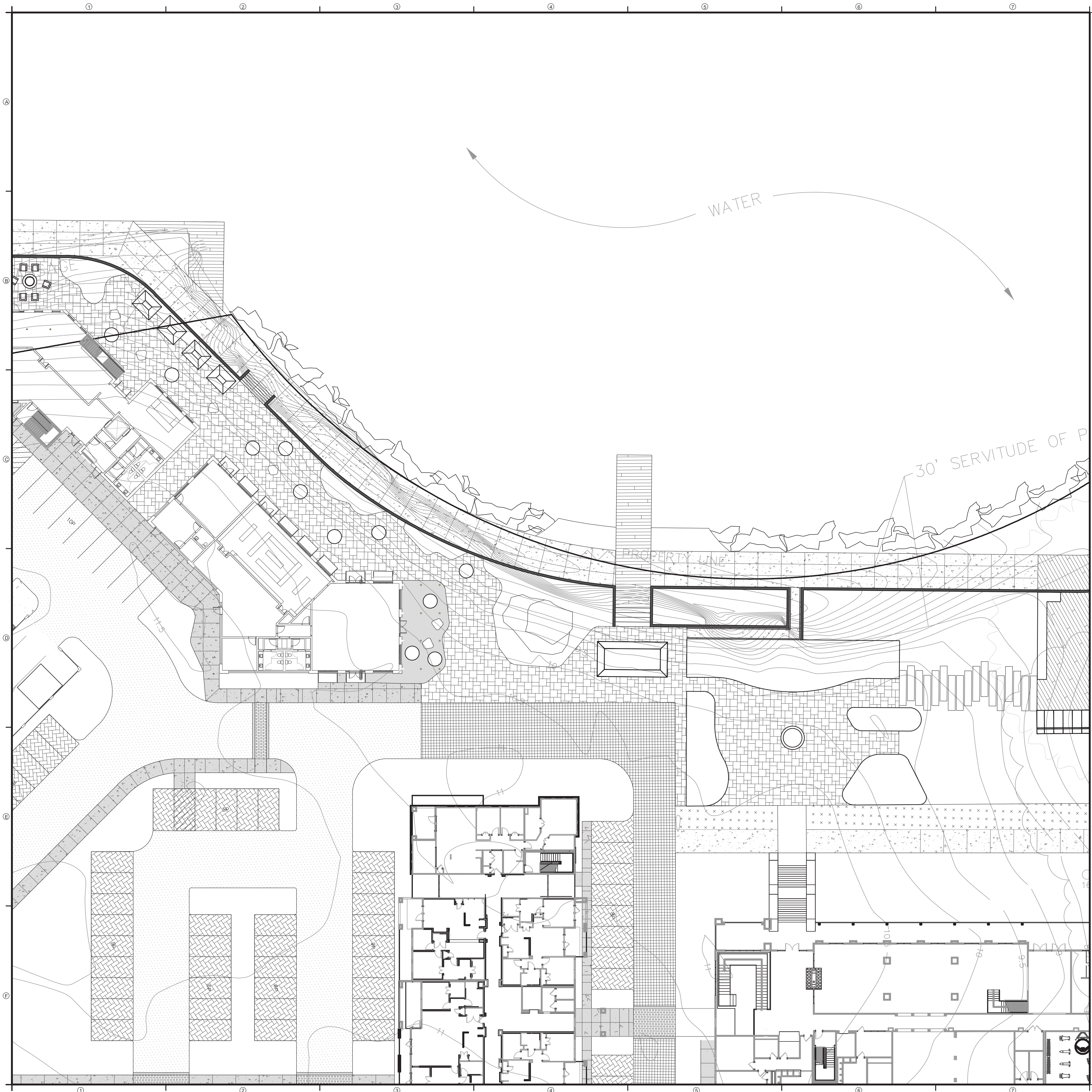
L4-01

MATERIALS LEGEND

-  Vehicular Pavement Type 1.A (Asphalt)
-  Vehicular Pavement Type 1.A (Permeable Paver)
-  Vehicular Pavement Type 1.C (Unit Paver)
-  Vehicular Pavement Type 1.D (Brick)
-  Pedestrian Pavement Type 5 (Salt Finished Concrete)
-  Pedestrian Pavement Type 8 (Boardwalk)
-  Pedestrian Pavement Type 2 (Scored Concrete)
-  Grass Pave
-  Pedestrian Pavement Type 1 (Crushed Granite)
-  Pedestrian Pavement Type 7-A/B (Unit Paver)



Aug 12, 2022 2:45pm
F:\PROJECTS_M\6778_Mandeville\6778_L4_Site Layout Plan_H1_FLOOR.dwg



MATERIALS LEGEND

- Vehicular Pavement Type 1.A (Asphalt)
- Vehicular Pavement Type 1.A (Permeable Paver)
- Vehicular Pavement Type 1.C (Unit Paver)
- Vehicular Pavement Type 1.D (Brick)
- Pedestrian Pavement Type 5 (Salt Finished Concrete)
- Pedestrian Pavement Type 8 (Boardwalk)
- Pedestrian Pavement Type 2 (Scored Concrete)
- Grass Pave
- Pedestrian Pavement Type 1 (Crushed Granite)
- Pedestrian Pavement Type 7-A/B (Unit Paver)

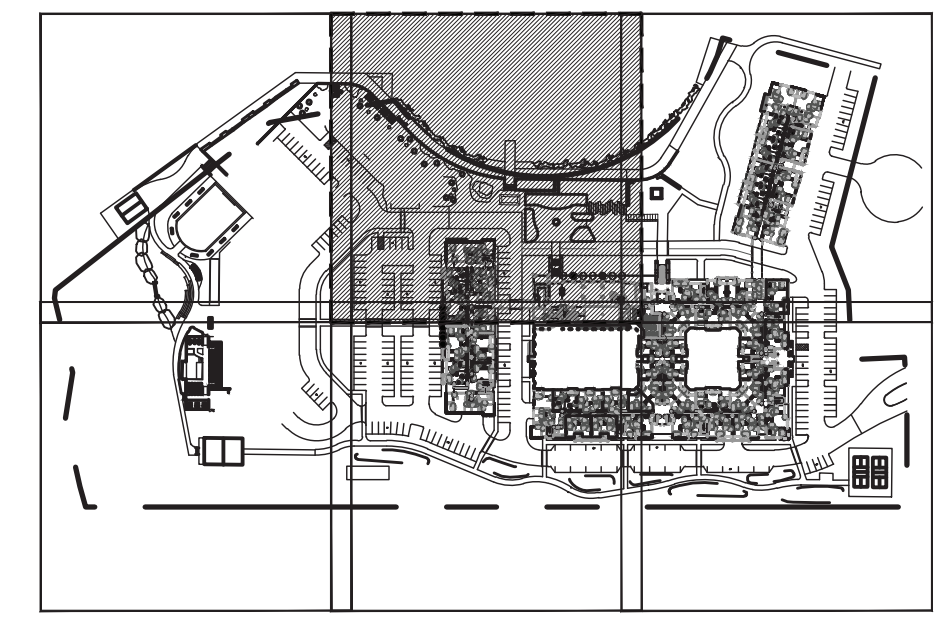
MARINERS VILLAGE
MANDEVILLE HARBOR LLC
MANDEVILLE, LA

PRELIMINARY
NOT FOR
CONSTRUCTION

ISSUE DATE: 02/18/2022

REVISIONS		
#	DATE	DESCRIPTION

DRAWN: _____ REVIEWED: _____



SCHEMATIC
DESIGN

PROJECT NUMBER: 6778

FIRST FLOOR
LAYOUT PLAN

L4-02



Aug 12, 2022 2:52pm
F:\PROJECTS_M\6778_Mandeville\6-CAD\02_Schematic\6778_L4_Site Layout Plan-1F FLOOR.dwg



MATERIALS LEGEND

- Vehicular Pavement Type 1.A (Asphalt)
- Vehicular Pavement Type 1.A (Permeable Paver)
- Vehicular Pavement Type 1.C (Unit Paver)
- Vehicular Pavement Type 1.D (Brick)
- Pedestrian Pavement Type 5 (Salt Finished Concrete)
- Pedestrian Pavement Type 8 (Boardwalk)
- Pedestrian Pavement Type 2 (Scored Concrete)
- Grass Pave
- Pedestrian Pavement Type 1 (Crushed Granite)
- Pedestrian Pavement Type 7-A/B (Unit Paver)

DESIGNWORKSHOP

Landscape Architecture • Land Planning
 Urban Design • Tourism Planning
 Asheville • Aspen • Austin • Chicago • Denver • Dubai
 Houston • Lake Tahoe • Los Angeles • Raleigh • Shanghai

301 N. West St.
 Suite 109
 Raleigh, NC 27603

WWW.DESIGNWORKSHOP.COM

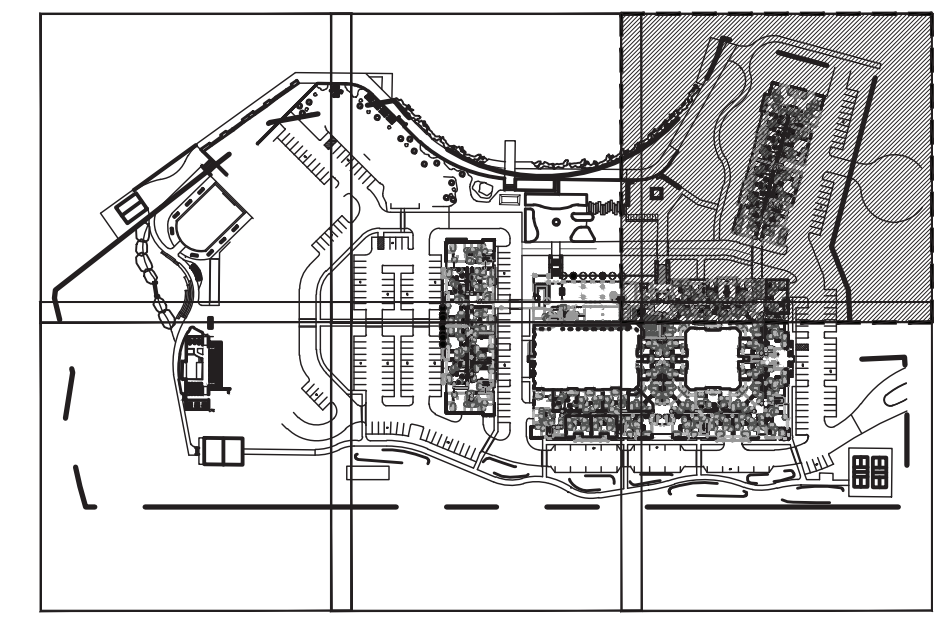
MARINERS VILLAGE
MANDEVILLE HARBOR LLC
 MANDEVILLE, LA

PRELIMINARY
NOT FOR
CONSTRUCTION

ISSUE DATE: 02/18/2022

REVISIONS	#	DATE	DESCRIPTION

DRAWN: _____ REVIEWED: _____



SCHEMATIC
DESIGN

PROJECT NUMBER: 6778

FIRST FLOOR
LAYOUT PLAN

L4-03



Aug 12, 2022 2:54pm
 F:\PROJECTS\1419773\ManDeville\CD\0212_Schematic\4778_L4_Site Layout Plan-1F FLOOR.dwg

MARINERS VILLAGE
MANDEVILLE HARBOR LLC
MANDEVILLE, LA

PRELIMINARY
NOT FOR
CONSTRUCTION

ISSUE DATE: 02/18/2022

REVISIONS		
#	DATE	DESCRIPTION

DRAWN: _____ REVIEWED: _____

SCHEMATIC
DESIGN

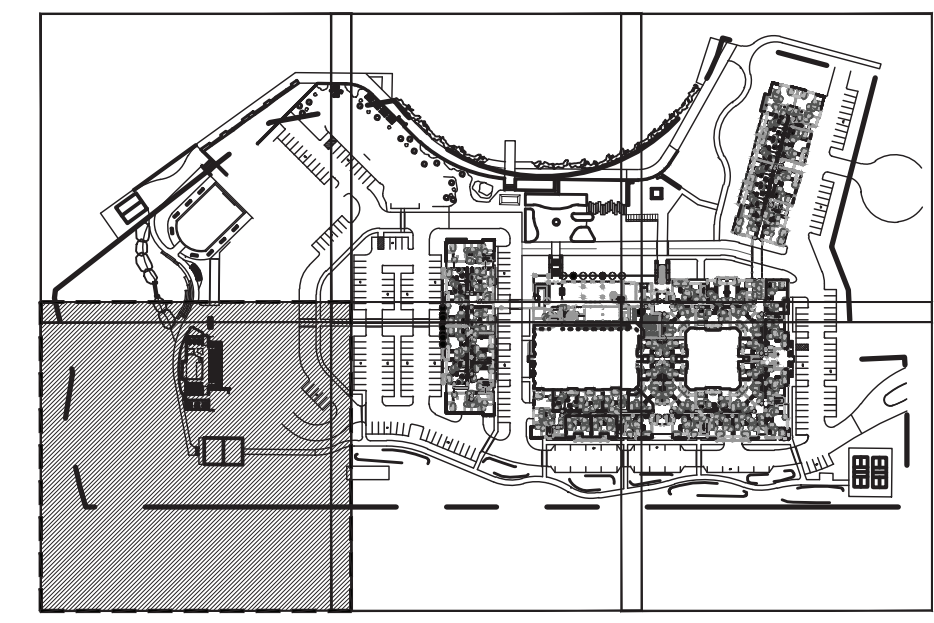
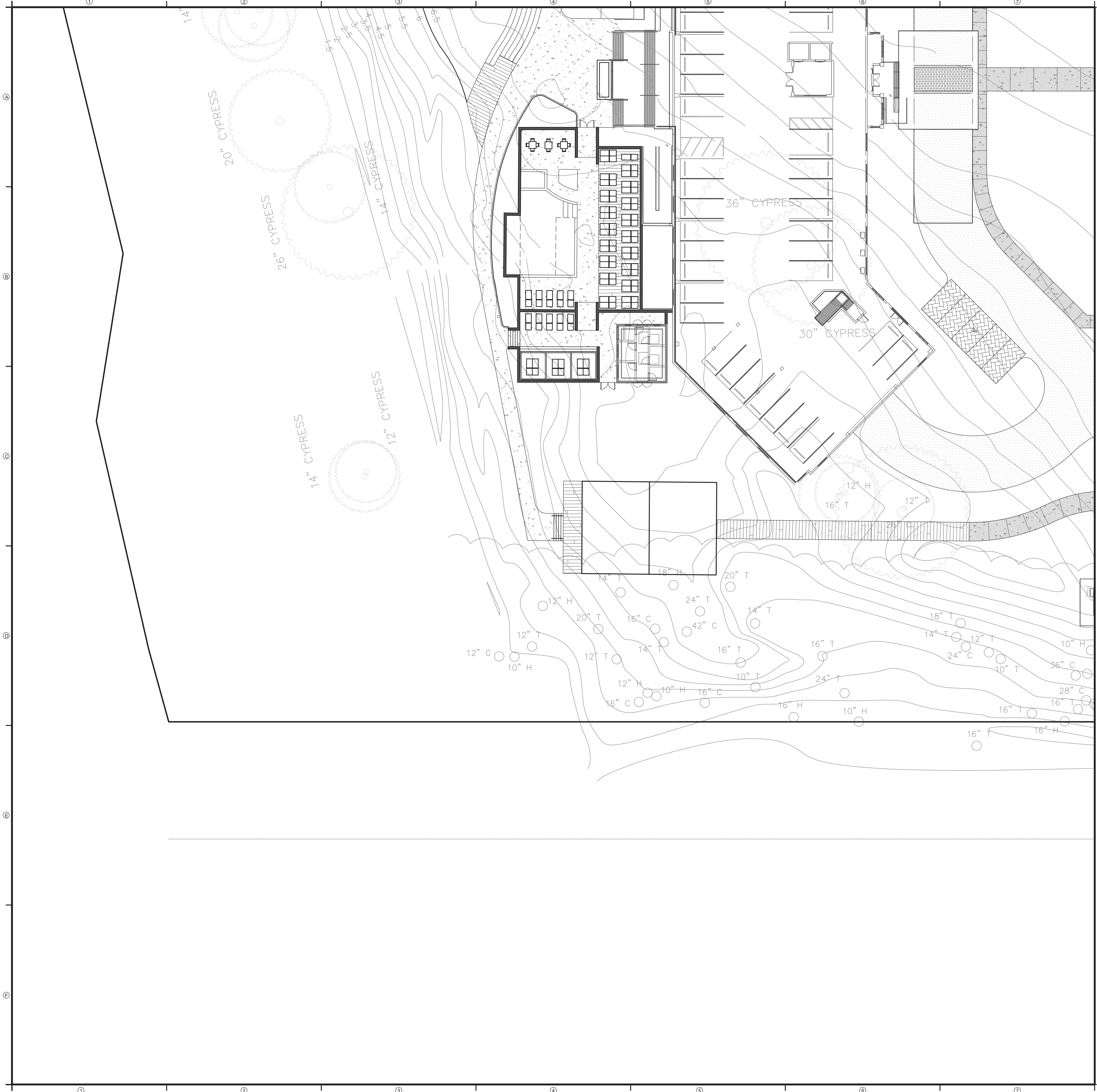
PROJECT NUMBER: 6778

FIRST FLOOR
LAYOUT PLAN

L4-04

MATERIALS LEGEND

- Vehicular Pavement Type 1.A (Asphalt)
- Vehicular Pavement Type 1.A (Permeable Paver)
- Vehicular Pavement Type 1.C (Unit Paver)
- Vehicular Pavement Type 1.D (Brick)
- Pedestrian Pavement Type 5 (Salt Finished Concrete)
- Pedestrian Pavement Type 8 (Boardwalk)
- Pedestrian Pavement Type 2 (Scored Concrete)
- Grass Pave
- Pedestrian Pavement Type 1 (Crushed Granite)
- Pedestrian Pavement Type 7-A/B (Unit Paver)



Aug 12, 2022 2:56pm
F:\PROJECTS_A\6778_Mandeville\CD\CD12_Sheets\6778_L4_Site Layout Plan-1F FLOOR.dwg

MARINERS VILLAGE
MANDEVILLE HARBOR LLC
MANDEVILLE, LA

PRELIMINARY
NOT FOR
CONSTRUCTION

ISSUE DATE: 02/18/2022

REVISIONS		
#	DATE	DESCRIPTION

DRAWN: _____ REVIEWED: _____



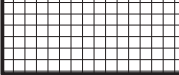
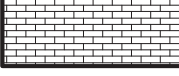
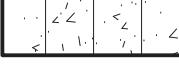


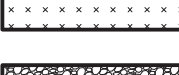


SCHEMATIC
DESIGN

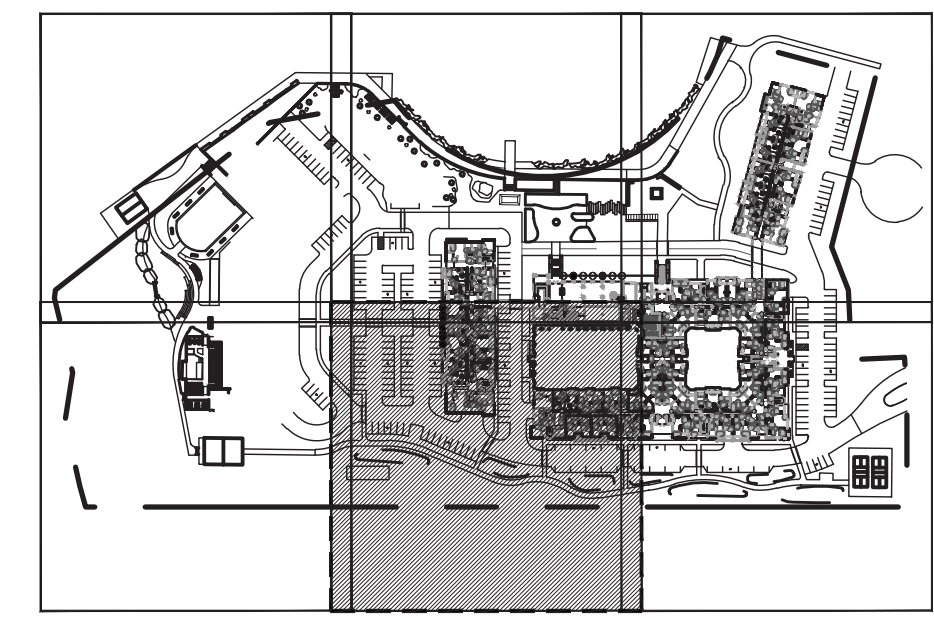
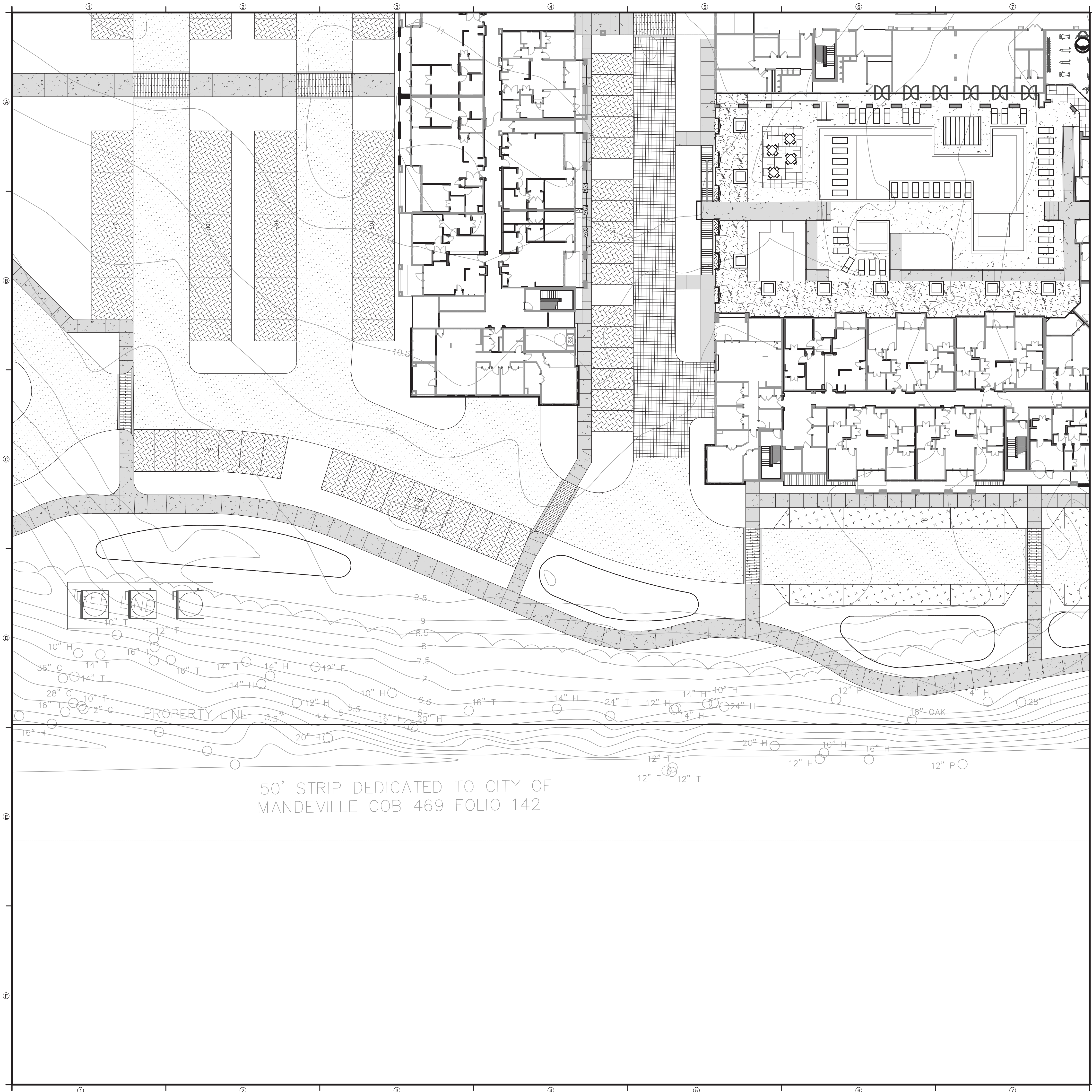
PROJECT NUMBER: 6778

FIRST FLOOR
LAYOUT PLAN

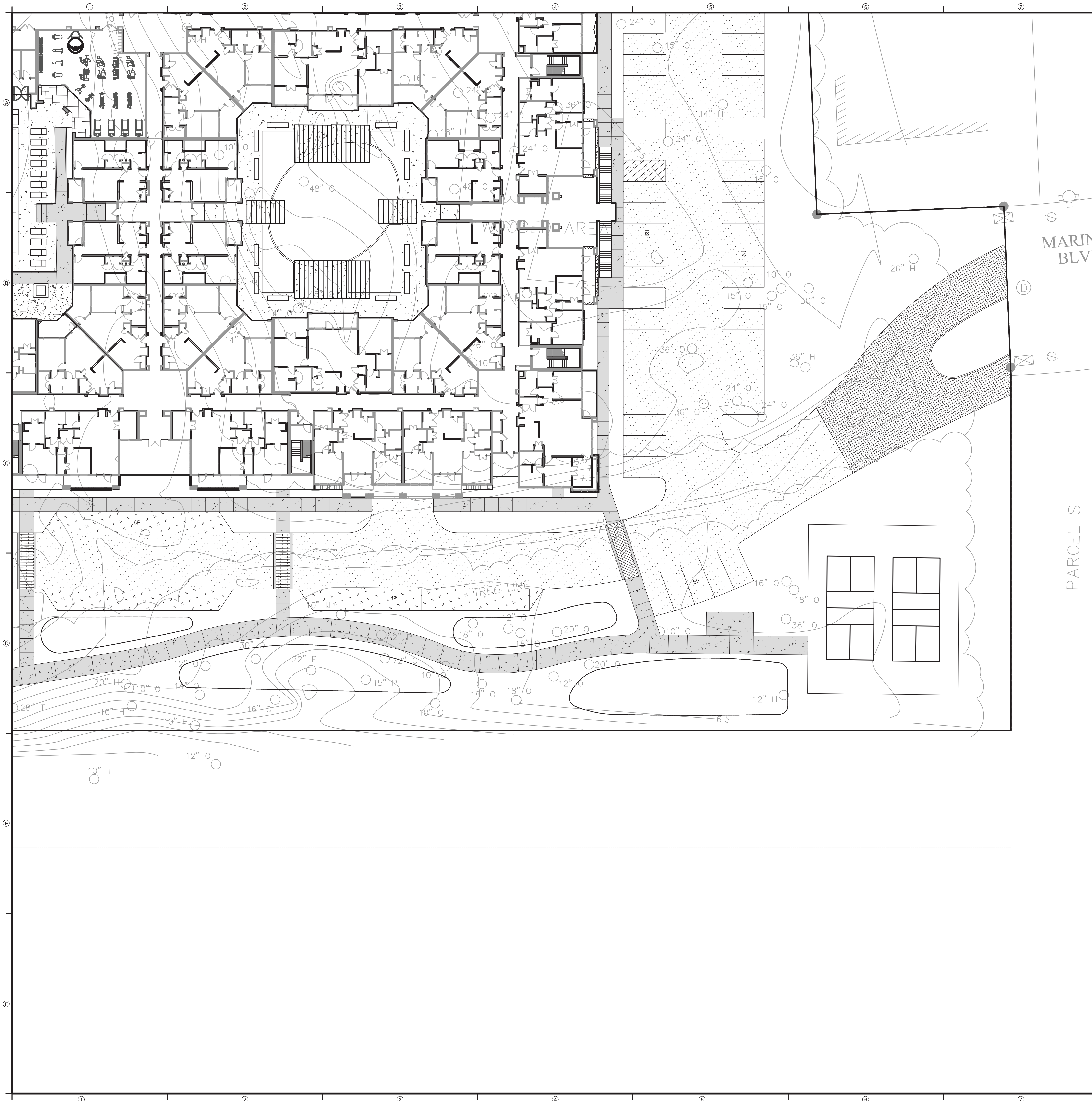
L4-05

MATERIALS LEGEND

-  Vehicular Pavement Type 1.A (Asphalt)
-  Vehicular Pavement Type 1.A (Permeable Paver)
-  Vehicular Pavement Type 1.C (Unit Paver)
-  Vehicular Pavement Type 1.D (Brick)
-  Pedestrian Pavement Type 5 (Salt Finished Concrete)
-  Pedestrian Pavement Type 8 (Boardwalk)
-  Pedestrian Pavement Type 2 (Scored Concrete)
-  Grass Pave
-  Pedestrian Pavement Type 1 (Crushed Granite)
-  Pedestrian Pavement Type 7-A/B (Unit Paver)



Aug 12, 2022 2:59pm
F:\PROJECTS_A\6778_Mandeville\6778_L4_Site Layout Plan-1st Floor.dwg



MATERIALS LEGEND

- Vehicular Pavement Type 1.A (Asphalt)
- Vehicular Pavement Type 1.A (Permeable Paver)
- Vehicular Pavement Type 1.C (Unit Paver)
- Vehicular Pavement Type 1.D (Brick)
- Pedestrian Pavement Type 5 (Salt Finished Concrete)
- Pedestrian Pavement Type 8 (Boardwalk)
- Pedestrian Pavement Type 2 (Scored Concrete)
- Grass Pave
- Pedestrian Pavement Type 1 (Crushed Granite)
- Pedestrian Pavement Type 7-A/B (Unit Paver)

MARINERS VILLAGE
MANDEVILLE HARBOR LLC
MANDEVILLE, LA

PRELIMINARY
NOT FOR
CONSTRUCTION

ISSUE DATE: 02/18/2022

REVISIONS	#	DATE	DESCRIPTION

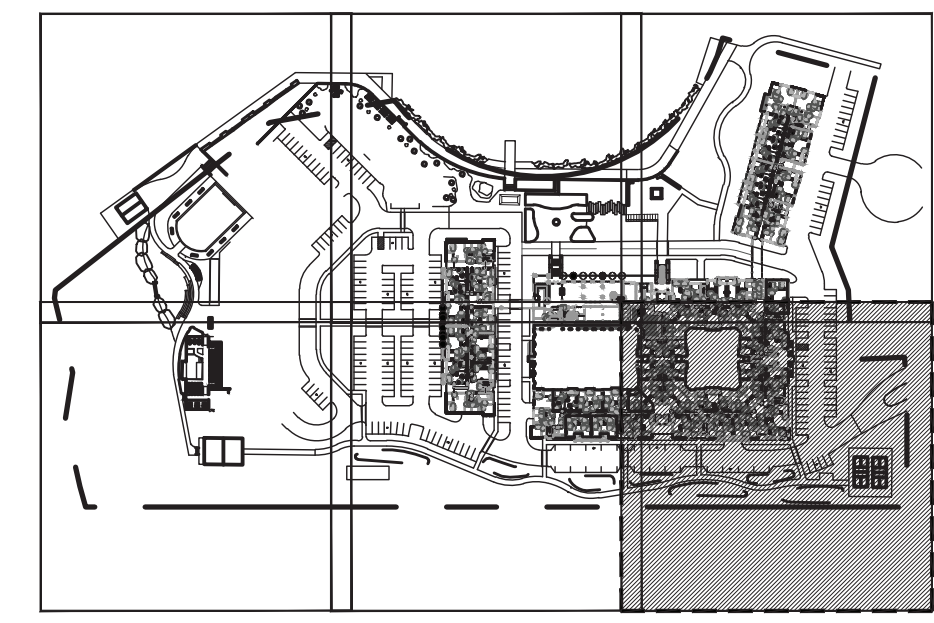
DRAWN: _____ REVIEWED: _____

SCHEMATIC
DESIGN

PROJECT NUMBER: 6778

FIRST FLOOR
LAYOUT PLAN

L4-06



Aug 12, 2022 3:02pm
F:\PROJECTS_M\6778_Mandeville\CD\CD12_Sheets\6778_L4_Site Layout Plan_1st Floor.dwg