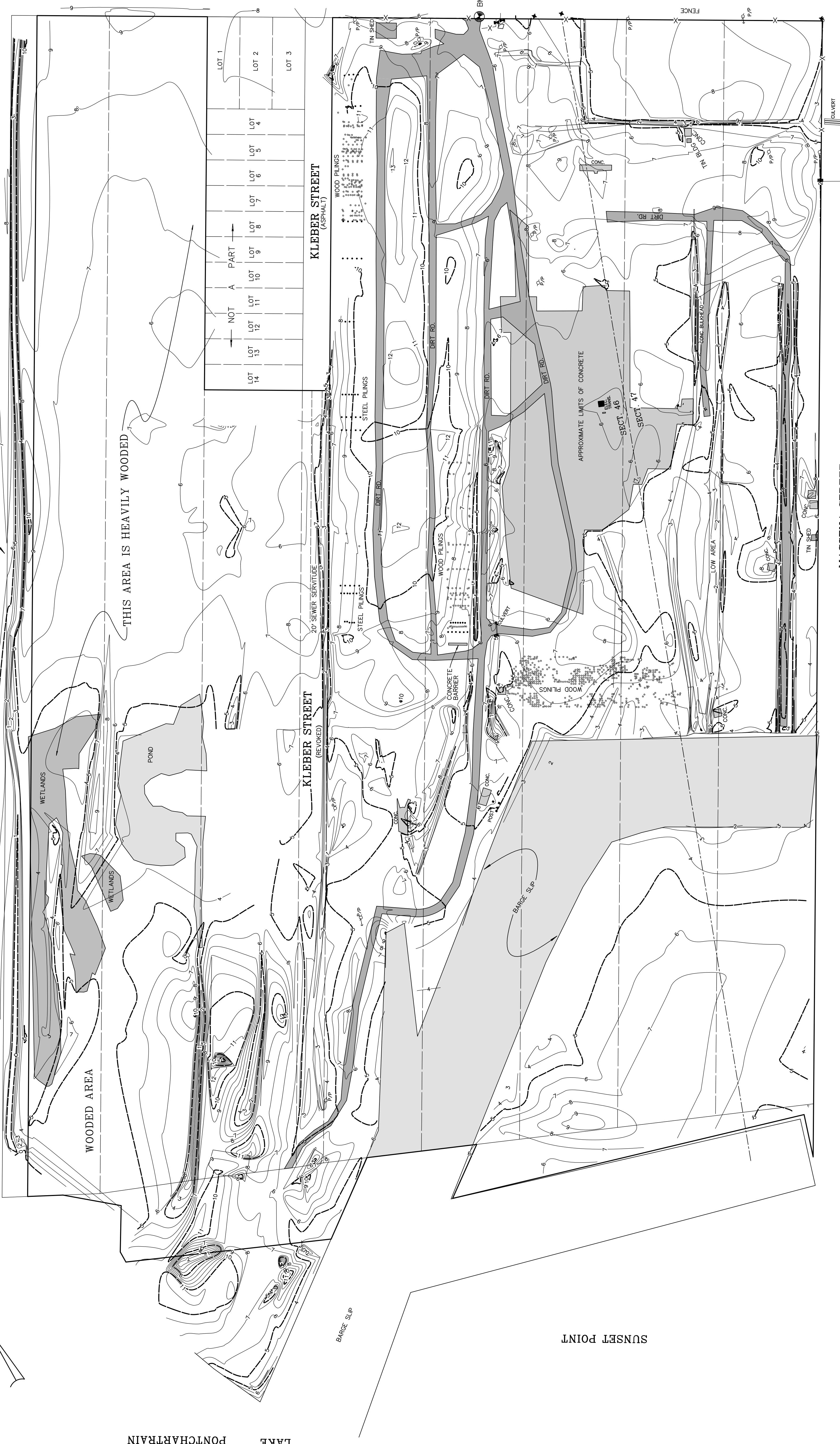


50' DRAINAGE CANAL
(TOWN OF MANDEVILLE)



LAKE PONTCHARTRAIN

SUNSET POINT

THIS AREA IS HEAVILY WOODED

LOT 14	LOT 13	LOT 12	LOT 11	LOT 10	LOT 9	LOT 8	LOT 7	LOT 6	LOT 5	LOT 4	LOT 3
PART A											
NOT											

MONROE STREET
(ASPHALT)

KLEBER STREET
(ASPHALT)

MASSENA STREET
(ASPHALT)

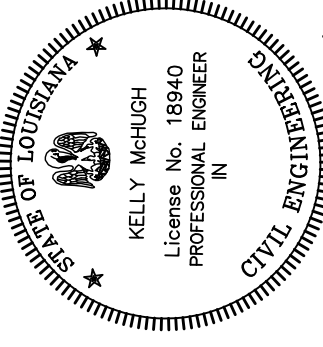
TOPOGRAPHIC SURVEY

76.648 ACRES BEING:
 LOTS 14, 15, 16, 17, 18, 20, 21,
 A PORTION OF LOT 19, PARCELS A & B,
 AND A PORTION OF KLEBER STREET,
 CITY OF MANDEVILLE, ST. TAMMANY PARISH, LA.

PREPARED FOR:
 PITTMAN ASSETS, LLC
 (PORT MARIORY, LLC)

KELLY J. McHUGH & ASSOC., INC.
 CIVIL ENGINEERS & LAND SURVEYORS
 845 GALVEZ ST. - MANDEVILLE, LA.
 628-5611

REVISIONS	DATE	DATE
MARK	08-22-15	01-26-15
	08-30-15	13-136
		13-136
		13-136



06-30-15
[Signature]

REMARKS: "N" NAIL SET
 BEING 50' WGS
 (NAVD83 - GEOD 12A)

NOTE: TOPOGRAPHIC LINES ARE A MATHEMATICAL INTERPOLATION OF ELEVATIONS TAKEN AT SPACED POINTS. THE ELEVATION OF ANY POINT WAS TAKEN, AND THE TOPOGRAPHIC LINE ELEVATION AND THE ACTUAL GROUND ELEVATION MAY VARY.