

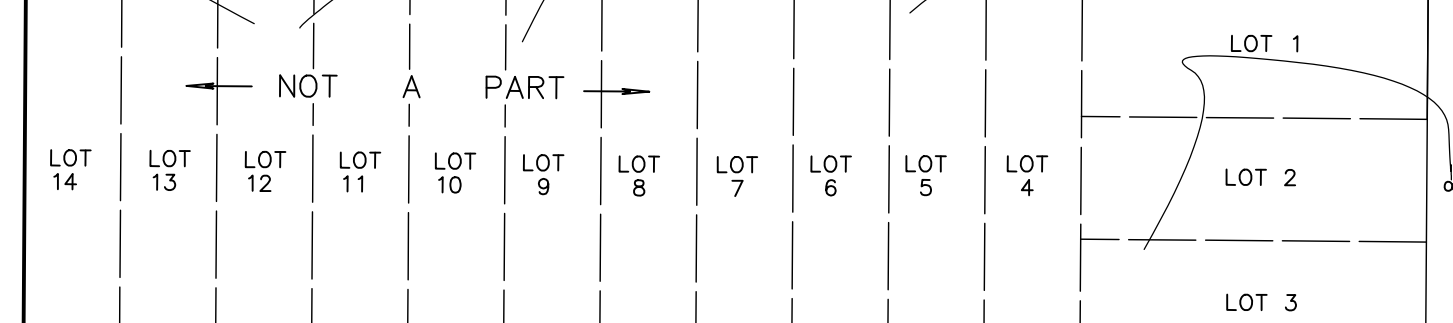
50' DRAINAGE CANAL  
(TOWN OF MANDEVILLE)

WOODED AREA

WETLANDS

POND

THIS AREA IS HEAVILY WOODED



KLEBER STREET  
(REVOKED)

20' SEWER SERVITUDE

KLEBER STREET  
(ASPHALT)

MONROE STREET  
(ASPHALT)

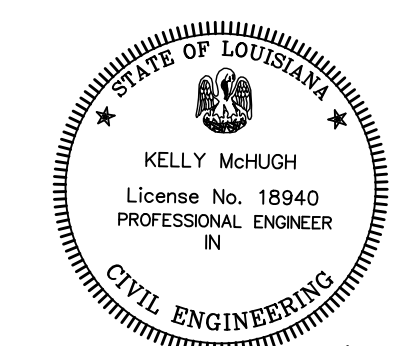
LAKE PONTCHARTRAIN

SUNSET POINT

MASSENA STREET  
(ASPHALT)

BENCHMARK - "PK" NAIL SET  
ELEV = 6.50' MSL  
(NAVD88 - GEOD 12A)

NOTE:  
THE TOPOGRAPHIC LINES ARE A MATHEMATICAL INTERPOLATION  
OF ELEVATIONS TAKEN BETWEEN KNOWN ELEVATIONS ON A GRID.  
THE ACTUAL ELEVATION IS ONLY PRECISE WHERE THE ELEVATION  
POINT WAS TAKEN, AND THE TOPOGRAPHIC LINE ELEVATION AND  
THE ACTUAL GROUND ELEVATION MAY VARY.



*Kelly J. McHugh*  
06-30-15

### TOPOGRAPHIC SURVEY

76.648 ACRES BEING,  
LOTS 14, 15, 16, 17, 18, 20, 21,  
A PORTION OF LOT 19, PARCELS A & B,  
AND A PORTION OF KLEBER STREET,  
CITY OF MANDEVILLE, ST. TAMMANY PARISH, LA.

PREPARED FOR:  
**PITTMAN ASSETS, LLC**  
(PORT MARIIGNY, LLC)

REVISIONS	
MARK	DATE
	06-22-15
	06-30-15

SCALE: 1" = 100'	DATE: 01-26-15
DRAWN: M D M	JOB NO.: 13-136
CHECKED:	DWG. NO.: 13-136-TOPO

**KELLY J. McHUGH & ASSOC., INC.**  
CIVIL ENGINEERS & LAND SURVEYORS  
845 GALVEZ ST. - MANDEVILLE, LA.  
626-5611