

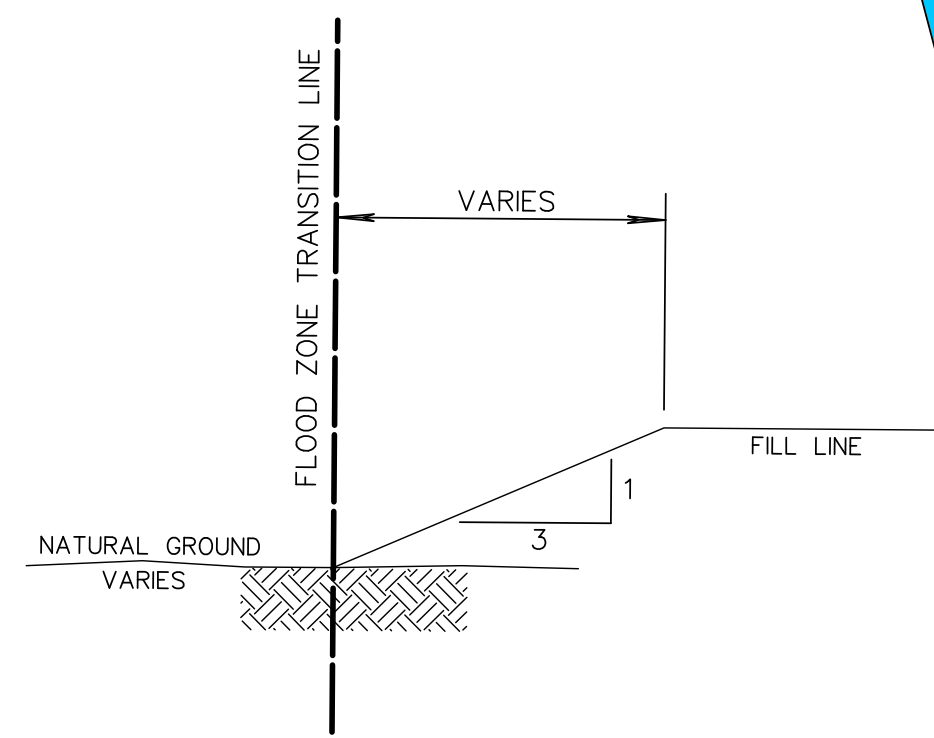
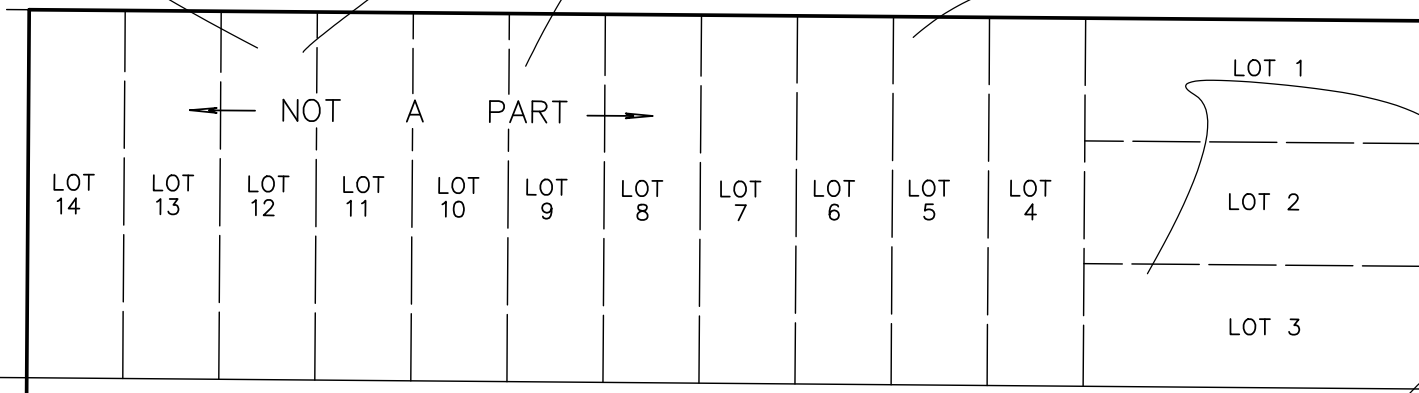
PONTCHARTRAIN LAKE

SUNSET POINT

50' DRAINAGE CANAL

WOODED AREA

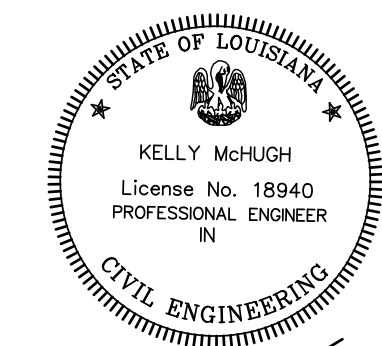
THIS AREA IS HEAVILY WOODED



**LEGEND**  
 = FILL  
 = CUT

BENCHMARK - "pk" NAIL SET  
 ELEV = 6.50' MSL  
 (NAVD88 - GEOD 12A)

NOTE:  
 THE TOPOGRAPHIC LINES ARE A MATHEMATICAL INTERPOLATION OF ELEVATIONS TAKEN BETWEEN KNOWN ELEVATIONS ON A GRID. THE ACTUAL ELEVATION IS ONLY PRECISE WHERE THE ELEVATION POINT WAS TAKEN, AND THE TOPOGRAPHIC LINE ELEVATION AND THE ACTUAL GROUND ELEVATION MAY VARY.



*Kelly McHugh*  
 09-25-15

**GRADING PLAN**  
 (CUT + FILL)

76.648 ACRES BEING,  
 LOTS 14, 15, 16, 17, 18, 20, 21,  
 A PORTION OF LOT 19, PARCELS A & B,  
 AND A PORTION OF KLEBER STREET  
 CITY OF MANDEVILLE, ST. TAMMANY PARISH, LA.

PITTMAN ASSETS, LLC  
 (PORT MARGINY, LLC)

REVISIONS		DATE	
MARK	DATE	MARK	DATE

**KELLY J. McHUGH & ASSOC., INC.**  
 CIVIL ENGINEERS & LAND SURVEYORS  
 845 GALVEZ ST. - MANDEVILLE, LA.  
 626-5611

SCALE: 1" = 100'      DATE: 09-25-15  
 DRAWN: M D M      JOB NO.: 13-136  
 CHECKED:      DWG. NO.: 13-136-GP